



ANNA

American Nephrology
Nurses Association

National Symposium

New Orleans

LOUISIANA

April 25-28, 2026
Hilton Riverside



Learn & Connect

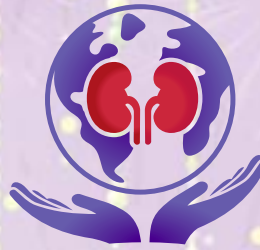
Learn & Connect

with nephrology nurse colleagues – in person or virtually – at the 2026 ANNA National Symposium. The hybrid educational program enables you to choose the learning experience that meets your personal and professional needs. Gather with nephrology professionals in Louisiana for a live educational experience, in-person networking opportunities, and time to explore New Orleans. If you can't travel to Louisiana, then participate virtually! Livestream registration options allow you to interact with other attendees and conference speakers online and earn contact hours from your home or workplace.

The ANNA National Symposium provides you with the opportunity to:

- **Learn** from expert speakers about the current issues and advances in the nephrology nursing specialty.
- **Enhance** your knowledge and take your professional practice to the next level.
- **Collaborate** with nurse colleagues and industry representatives and expand your professional network.
- **Join** a community of nurses who support your success and share your commitment to quality care.

At the American Nephrology Nurses Association (ANNA), we are committed to health access for all individuals and the core values that support this which are foundational to our culture. We strive to create an environment where all individuals are respected, valued, and empowered, and where our practices are both equitable and inclusive. By embracing and celebrating our differences, ANNA fosters a sense of belonging that unites individuals from all backgrounds, cultures, and perspectives. This inclusive climate strengthens our community and supports the advancement of ANNA's mission and vision.



ANNA
American Nephrology
Nurses Association

**Register by February 9
for the best rates!**
annanurse.org/symp26

ANNA Conferences Committee

Chairperson

Jennifer Branch, DNP, APRN, A-GNP-C,
CNN-NP, CCTC, FNKF

Chairperson Designate

Christine Corbett, DNP, FNP-BC,
CNN-NP, ACHPN, FNKF, FANNA

Committee Members

Leah Foster Smith, MSN, APRN,
FNP-BC, CNN-NP, FNKF, FANNA, FAANP

Louisa Freiburger, RN, CDN

Aimee Herrick, BSN, RN

Patricia McCarley, MSN, RN,
ACNPc, CNN

Shawn Pleasant, BSN, RN, CDN

Lucy Todd, MSN, ACNP, FANNA, CNNe

Director of Education Services

Trisha Mims, PhD, MBA, HCM, RN

Symposium Agenda

Friday, April 24, 2026



7:15 pm ~ 8:00 pm

100 Orientation for New ANNA Members/First-Time and International Attendees

Learn how to make the most of your symposium experience. Get tips on navigating the program, completing the evaluation process, and maximizing networking opportunities.

8:00 pm ~9:30 pm

101 Movie Night

Join your colleagues and view *Everybody's Work: Healing What Hurts Us All*, directed by Chand Tingle. This film examines the hidden disease plaguing healthcare in the United States: systemic racism. Through the lens of fearless nurses, this documentary not only exposes the biases that result in worse healthcare outcomes for people of color, but it captures the painful impact they have — both on patients and nurses. Light refreshments will be served.



Saturday, April 25, 2026

7:00 am ~ 8:00 am

Continental Breakfast

8:00 am ~ 9:00 am

Concurrent Sessions & LEAD Workshops (111-114)

111 From Assessment to Action: When to Call the Provider

1.0 CH

Patricia McCarley, MSN, RN,
ACNP-BC, CNN

Shawn Pleasant, BSN, RN, CDN

In this interactive, clinical skills-driven session, dialysis nurses will refine their assessment techniques, learn to distinguish routine from emergent findings, and apply clinical judgment to escalate care appropriately.

112 Cultivating Leadership and Building Resilient Teams: Strategies for Retaining Nephrology Nurses

1.0 CH

Judy Kauffman, DNP, RN, CNN

This session will equip nephrology nurses with practical tools to cultivate leadership at all levels, build resilient teams, and implement strategies to enhance staff retention in dialysis units, clinics, and hospital settings. Participants will learn actionable approaches to foster a positive culture, reduce burnout, and support professional growth within their teams.

113 LEAD Workshop for Chapter Officers

This workshop will provide leadership training and development for ANNA chapter officers. Invitations and complete program details will be provided to 2026 chapter officers in February 2026.



114 LEAD Workshop for SPN Leaders/Advisors

This workshop will provide leadership training and development for Specialty Practice Network (SPN) Leaders and Advisors. Invitations and complete program details will be provided to incoming 2026-2027 SPN Leaders/Advisors in February 2026.



CH = ANCC Contact Hour

Symposium Agenda

Saturday, April 25, 2026

9:15 am ~ 10:15 am

Concurrent Sessions & LEAD Workshops (121-124)

121 Filtered Facts: Safeguarding Dialysis Through Water Quality - Novice

1.0 CH

Heather Paradis

Jennifer Vavrinchik, MSN, RN, CNN

This session explores the vital role of water quality in ensuring patient safety and optimizing dialysis outcomes. Participants will gain a comprehensive understanding of the dialysis water treatment system, including each component's purpose and function—from water source through final delivery. Emphasis will be placed on the importance of maintaining high water quality to prevent patient exposure to harmful contaminants.

122 Leading through Change

1.0 CH

Nancy Colobong Smith, MN, ARNP, ANP-BC,
CNN, FANNA

Change is inevitable but must be structured and managed to produce the desired results.

123 LEAD Workshop for Chapter Officers

This workshop will provide leadership training and development for ANNA chapter officers. Invitations and complete program details will be provided to 2026 chapter officers in February 2026.



124 LEAD Workshop for SPN Leaders/Advisors

This workshop will provide leadership training and development for Specialty Practice Network (SPN) Leaders and Advisors. Invitations and complete program details will be provided to incoming 2026-2027 SPN Leaders/Advisors in February 2026.



10:15 am -10:30 am

Coffee Break



10:30 am ~ 11:30 am

Concurrent Sessions & LEAD Workshops (131-134)

131 Hepatitis B: Considerations in the Inpatient Dialysis Setting - Novice

1.0 CH

Cynthia Adorno, MSN, RN

Kasadi Moore, MSNI, RN

Brianna Sullivan, MSN, APRN, FNP-BC

This session explores the critical impact of hepatitis B on the dialysis population, with a focus on the inpatient setting. Learn how to protect patients and staff while maintaining compliance and continuity of care.

132 Dialyzing the Failing Heart: Ventricular Assist Devices, Inotropes, and Advanced Therapies

1.0 CH, Rx

Catherine Wells, DNP, ACNP-BC, CNN-NP FNKF

This session will explore dialysis management in advanced heart failure (HF) amid the flurry of innovation in heart support. HF treatment options, indications, evidence, and outcomes will be reviewed. Ventricular assist devices will be addressed as they impact kidney function and require changes to standard dialysis nursing care. Hemodialysis and peritoneal dialysis in combination with advanced heart therapies will be discussed, including nursing implications, prescription adjustments, and access choice. Finally, education recommendations for facilities and providers will be reviewed.

133 LEAD Workshop for Chapter Officers

This workshop will provide leadership training and development for ANNA chapter officers. Invitations and complete program details will be provided to 2026 chapter officers in February 2026.



134 LEAD Workshop for SPN Leaders/Advisors

This workshop will provide leadership training and development for Specialty Practice Network (SPN) Leaders and Advisors. Invitations and complete program details will be provided to incoming 2026-2027 SPN Leaders/Advisors in February 2026.



CH = ANCC Contact Hour

Symposium Agenda

Saturday, April 25, 2026

11:45 am ~ 12:45 pm

Concurrent Sessions & LEAD Workshops (141-144)

141 Staying on Schedule: How to Prevent Complications from Missed Dialysis

1.0 CH

Connie Nelson, MBA, BSN, RN
Emily Vellano, MSW, LCSW

This session will explore the critical clinical impact of missed or shortened dialysis treatments, including complications such as fluid overload, electrolyte imbalances, and increased risk of hospitalization. Participants will gain insight into the most common reasons patients miss dialysis—ranging from transportation issues to psychosocial barriers—and learn practical approaches to overcoming these challenges.

142 Cardio-Kidney Protection in Chronic Kidney Disease: The Role of SGLT2 Inhibitors, GLP-1 Agonists, and Steroidal MRAs, and Future Directions

1.0 CH, Rx

Wendy St. Peter, PharmD, FCCP, FASN, FNKF

This session will explore how two emerging pharmacologic classes—SGLT2 inhibitors and GLP-1 receptor agonists—are transforming care through synergistic cardio- and reno-protective effects, before considering evolving guidelines, unmet needs, and next generation strategies in dialysis care.

143 LEAD Workshop for Chapter Officers

This workshop will provide leadership training and development for ANNA chapter officers. Invitations and complete program details will be provided to 2026 chapter officers in February 2026.



144 LEAD Workshop for SPN Leaders/Advisors

This workshop will provide leadership training and development for Specialty Practice Network (SPN) Leaders and Advisors. Invitations and complete program details will be provided to incoming 2026-2027 SPN Leaders/Advisors in February 2026.



1:00 pm ~ 2:30 pm

150 Lunch Symposium

Pending corporate support

2:30 pm ~ 3:30 pm

Concurrent Sessions & LEAD Workshops (151-154)

151 Calming the Storm: Emotional Intelligence and De-Escalation for Patients on Dialysis

1.0 CH

Connie Gogan, MSW, LMSW

Dialysis units are high-stress clinical environments where patients may experience anxiety, frustration, and emotional exhaustion. Participants will gain practical skills rooted in emotional intelligence to prevent and manage escalation, enhance patient trust, and foster a more supportive care atmosphere.

152 Advancing Anemia Management in Nephrology Nursing: Integrating KDIGO Guidelines Across the Care Continuum

1.0 CH, Rx

Jennifer Branch, DNP, APRN, AGNP-C, CNN-NP, CCTC, FNKF
Melanie Kreitzer, RN, CNN

Attendees will deepen their understanding of the pharmacologic landscape—including the use of erythropoiesis-stimulating agents, intravenous and oral iron, and emerging therapies—and learn how to apply these tools in dialysis, transplant, and conservative care settings. Special emphasis will be placed on managing anemia in unique populations such as those with polycystic kidney disease, patients receiving renal replacement therapies, and individuals post kidney transplantation.

153 Establishing a Comprehensive Admission and Onboarding Process for Pediatric Patients Dialyzing in Adult Units

1.0 CH

Alicia Zerkle, BS, RN

This session will provide an overview of pediatric dialysis, focusing on unique challenges and considerations when treating pediatric patients. The session will discuss the creation of a comprehensive interdisciplinary training and support program that fosters safe, quality, age-appropriate pediatric care in adult facilities.



CH = ANCC Contact Hour

Symposium Agenda

Saturday, April 25, 2026

154 **Healing the Healers: Addressing Toxic Culture in our Nephrology Clinics**

1.0 CH

Felicia Speed, PhD, LMSW

Toxic workplace culture can undermine staff morale, collaboration, and patient care. This session will explore the impact of toxic behavior, including bullying, gossip, burnout, lack of support, and fear of retaliation. Poor communication, blame culture, and lack of psychological safety that can lead to staff turnover, disengagement, and compromised patient outcomes also will be discussed. Tips for shifting toward a culture of healing – where empathy, transparency, and accountability are prioritized – will be shared. Learn strategies to identify toxic patterns, speak up safely, and contribute to a healthier, more resilient work environment.

4:00 pm ~ 4:30 pm

160 **Opening Ceremonies**

4:30 pm ~ 5:30 pm

Janel Parker Memorial Opening Session

170 **Stop Chasing, Start Creating: The Journey to More Meaningful Work and Living**

1.0 ANCC CH

Justin Jones-Fosu

Healthcare — and nephrology nursing especially — can feel like an endless chase: chasing patient outcomes, shifting priorities, recognition from peers, or even just the hope of balance outside of work. But what if meaning isn't something you chase, but something you create?

In this keynote re-imagined, award-winning author and global speaker Justin Jones-Fosu will deliver a fully immersive, multi-sensory experience that blends story, reflection, and interaction. It's not a lecture — it's a journey.

Through the lens of his soon-to-be-released fable, *Stop Chasing, Start Creating* (the untold story of the race before the race of the tortoise and the hare) and the meaning journey Model, Justin will invite nephrology nurses to:

- Stop chasing applause and start creating alignment with your values.
- Stop chasing busyness and start creating rhythm through intentional habits that sustain you.
- Stop chasing comfort and start creating resilience through challenges.

This keynote is not about adding more to your plate — it's about reshaping how you see your plate. You'll leave renewed, inspired, and equipped with practical rhythms to sustain meaningful work and meaningful living.



5:45 pm ~ 7:45 pm

180 **Exhibit Hall Grand Opening / Reception**

Meet with industry representatives and view displays of state-of-the-art technology, products, and services. Beverages and heavy hors d'oeuvres will be served.

Sunday, April 26, 2026

6:00 am ~ 6:45 am

210 **Fitness Walk/Run**

Energize your day by starting off the morning with a jog, walk, or leisurely stroll with friends.

7:15 am ~ 8:45 am

220 **Breakfast Symposium**

1.0 CH, Rx

Pending corporate support

8:45 am ~ 10:15 am

230 **Coffee Break~ Exhibits/Poster Session**

2.0 CH

Contact hours are available for viewing poster displays in the exhibit hall. Presenters will be available to discuss their posters during designated times.

10:15 am ~ 11:15 am
Concurrent Sessions (241-245)

241 **Sustaining Home Therapy After an Environmental Disaster**

1.0 CH

Melissa Hargett, RN

Sandra Reeves, BSN, RN, CNN

This panel discussion will open with a video of the Baxter plant in North Cove, NC, after hurricane Helene decimated it on September 27, 2024.

242 **Under Pressure: Diagnosis and Treatment of Resistant Hypertension**

1.0 CH, Rx

Wendy Wright, DNP, ANP-BC, FNP-BC, FAANP, FAAN FNAP

Resistant hypertension is a common and challenging problem in nephrology practice, requiring systematic evaluation and targeted management to improve patient outcomes. This session will equip nephrology nurses with the knowledge and tools needed to define resistant hypertension accurately, perform an appropriate diagnostic work-up, and implement evidence-based pharmacologic treatment strategies. Attendees will gain practical insights for managing this complex condition in patients with chronic kidney disease and across nephrology care settings.

CH = ANCC Contact Hour

Symposium Agenda

Sunday, April 26, 2026

243 Why Is This Patient on Dialysis? Nephrology Nurse Perspectives on the Dialysis Patient Population

1.0 CH

Christy Corbett, DNP, CNP, FNP-BC, CNN-NP, ACHPN, FNKF, FANNA
Kate Duberg, BA
Mary Haras, PhD, MBA, APN, NP-C, CNN, FANNA

"Why is this patient on dialysis?" A survey was conducted to obtain nephrology nurse perspectives on factors associated with hemodialysis initiation. Using data from this survey of the ANNA membership in May 2025, researchers will compare current data to data from 25 and 10 years ago, and will review results.

244 The Implications of Artificial Intelligence (AI) in Nephrology Nursing

1.0 CH

Lisa Zokas Kindy, JD
Kristin Larson, MSN, RN, AGNP-BC, CNN, FANNA

Artificial intelligence (AI) is rapidly transforming healthcare—offering powerful tools for diagnosis, documentation, decision support, and patient engagement. In nephrology nursing, AI holds particular promise for enhancing clinical accuracy, operational efficiency, and patient outcomes. This session will explore the current landscape, ethical frameworks, and legal safeguards essential for responsible AI integration in nephrology nursing practice.

245 What's Your Problem? An Interactive Workshop to Identify Root Causes and Jumpstart Process Improvement at Your Dialysis Facility

1.0 CH

Katelynn Booth, MSN, RN, CPHQ
Amanada Morelli, MSN, RN, CNN

This interactive workshop will help your team identify root causes and drive meaningful changes. Learn how to navigate the Centers for Medicare & Medicaid Services End-Stage Renal Disease and Quality Incentive Program metrics, bridge the gap between data and action, and build a strong quality improvement foundation using the Plan-Do-Study-Act model. Discover practical strategies to prioritize metrics without burnout and turn quality goals into sustainable results.



11:30 am – 12:30 pm
Concurrent Sessions (251-255)

251 Adequacy in Peritoneal Dialysis: Beyond Kt/V

1.0 CH
Lucy Todd, MSN, ACNP, CNNe, FANNA

Dialysis adequacy in the United States is measured in Kt/V, yet no other country uses this measurement. Kt/V will be discussed and its inadequacies covered. Additional markers of dialysis adequacy, such as volume management, will be reviewed and ways to achieve and maintain optimal volume management will be reviewed.

252 Revenue Ready: Coding and Billing Essentials for Nephrology Advanced Practice Providers

1.0 CH
Leah Foster Smith, MSN, APRN, FNP-BC, CNN-NP, FNKF, FANNA, FAANP

Unlock the full financial impact of your nephrology practice with confidence, accurate coding and billing. This session will provide nurse practitioners and physician assistants with practical, actionable strategies to align documentation with current E/M guidelines, optimize billing across office visits, dialysis, and acute care settings, and ensure practices capture appropriate reimbursement under Centers for Medicare & Medicaid Services guidelines. Participants will leave equipped to enhance their financial contributions while supporting high-quality patient care in nephrology.

253 From Growth to Graceful Aging: Chronic Kidney Disease Through the Years - Novice to Expert

1.0 CH
Lesley Dinwiddie, MSN, FNP, CNNe

Chronic kidney disease (CKD) care should vary from pediatrics to older adults. This session will equip nephrology nurses and nurse practitioners with a deeper understanding of CKD across the life-span. From the unique needs of pediatric and adolescent patients to reproductive health considerations in women, and from midlife disease progression to geriatric syndromes and conservative care, age-specific strategies to enhance patient-centered care will be explored.

254 Healing at the Cellular Level: Apheresis Strategies in Kidney Care

1.0 CH
Rasheed Balogun, MD, FACP, FASN, FMCP, HP, (ASCP)

Apheresis is used to treat conditions such as glomerulonephritis, thrombotic microangiopathies, and transplant rejection. Nephrology nurses play a key role in patient assessment, vascular access management, monitoring during procedures, and providing education and support. Understanding the different apheresis techniques, indications, equipment, and safety protocols is essential for delivering safe, effective care. Collaboration with the multidisciplinary team ensures optimal outcomes and enhances patient safety.

Symposium Agenda

Sunday, April 26, 2026

255 Transplant Update 2026

1.0 CH

David Serur, MD

Matthew Cooper, MD

Peter Kennealy, MD

This session is essential for healthcare professionals involved in transplantation, dialysis care, and organ donation advocacy who seek to enhance patient outcomes and navigate the complexities of transplant eligibility and donor evaluation.

12:30 pm ~ 1:30 pm

260 Box Lunch in the Exhibit Hall

Box lunch available for all registrants and exhibitors.

1:45 pm ~ 2:45 pm

Concurrent Sessions (261-265)

261 Incremental Peritoneal Dialysis Prescriptions: When Less is Better

1.0 CH

Lisa Ales, MSN, FNP-BC, FNP-C, CNN

For patients starting peritoneal dialysis who have urine output, initiating with a full dose prescription is no longer advised. An Incremental prescription considers clearance achieved via residual renal function, then adds enough dialysis to achieve adequacy. Benefits, patient management, and transitioning to full therapy when needed will be discussed.

262 Nephrology Pharmacology Update: Practical Pearls for Safe and Effective Prescribing

1.0 CH, Rx

Tracy Anderson-Haag, PharmD, BCPS, BCTXP

Staying current with nephrology pharmacotherapy is essential for nephrology nurses to provide safe, effective care while avoiding medication-related errors. This session will review key medications relevant to nephrology practice, including SGLT2 inhibitors, finerenone, newer phosphate binders, IV iron formulations, patiomer, sodium zirconium cyclosilicate, HIF-PHIs, and GLP-1 receptor agonists. Focus will be placed on practical applications in CKD, dialysis, and transplant care, emphasizing dosing adjustments, side effects, drug-drug interactions, and monitoring strategies to enhance prescribing confidence and prevent common medication errors in nephrology practice.

263 Proteinuria and Hematuria: What Every Nephrology Nurse Needs to Know

1.0 CH

Mary Schira, PhD, RN

Proteinuria and hematuria are frequent realities in nephrology patients, making it essential that nephrology nurses have a solid understanding of the clinical significance of each finding.

264 Palliative Care in Nephrology - Novice to Expert

1.0 CH

Christy Corbett, DNP, CNP, FNP-BC, CNN-NP, ACHPN, FNKF, FANNA

Megan Nolan, RN

Palliative care improves quality of life for patients with kidney disease by addressing symptoms, supporting decision-making, and enhancing holistic care. This session will help nephrology nurses understand the principles of palliative care, recognize when to initiate supportive services, and collaborate effectively to meet patients' physical, emotional, and spiritual needs.

265 Stronger Together: A Dialysis Support Community for Patients and Caregivers - Novice to Expert

1.0 CH

Kristie Lemmon, BS, BA, MBA

A dialysis support community for patients and caregivers is a welcoming space dedicated to sharing knowledge, encouragement, and connection. This community brings together individuals living with dialysis and those who care for them—offering emotional support, practical advice, and resources to navigate daily life with kidney disease. Whether you are newly diagnosed, adjusting to treatment, or supporting a loved one, this group provides a platform to ask questions, share experiences, and find strength in a shared journey. Together, we create a compassionate environment where no one feels alone in facing the challenges of dialysis.

2:45 pm ~ 4:00 pm

Exhibits/Poster Session/Refreshments

4:00 pm ~ 5:00 pm

Concurrent Sessions (271-275)

271 Making Nursing Theory Real

1.0 CH

Tammy Carmean, MBA-HM, BSN, RN, CMSRN

Donna Ferguson, BSN, RN

The Mishawaka model for home training units is built upon Jean Watson's theory of human caring. This session will review the basic tenets of human caring, how they have implemented this theory as the core of their program, and the impact on nurses and patient outcomes.

272 A Day in the Life: Exploring Nurse Practitioner Roles Across Chronic Kidney Disease, Dialysis, and Hospital Nephrology

1.0 CH

Leah Foster Smith, MSN, APRN, FNP-BC, CNN-NP, FNKF, FANNA, FAANP

This session will provide an inside look at the diverse roles of nephrology nurse practitioners (NPs) across chronic kidney disease clinics, dialysis units, and inpatient hospital settings. Attendees will gain insight into typical workflows, patient care priorities, and how NPs contribute to quality kidney care across the continuum.

CH = ANCC Contact Hour

Symposium Agenda

Sunday, April 26, 2026

273 Transplantation: Updates on Xenotransplants and Living Donation

1.0 CH

Nicole Ali, MD

This session will offer nephrology nurses a timely and comprehensive update on groundbreaking developments in xenotransplantation, highlighting recent clinical breakthroughs and future possibilities for addressing the organ shortage. It also will cover key updates in living kidney donations, including innovative donor matching programs and best practices for donor care.

274 From Guidelines to Bedside: KDIGO Clinical Update Review

1.0 CH, Rx

Jennifer Branch, DNP, APRN, AGNP-C, CNN-NP, CCTC, FNKF

This session will provide an in-depth review of the most recent updates to the KDIGO (Kidney Disease: Improving Global Outcomes) clinical practice guidelines, focusing on evidence-based recommendations in the management of kidney disease. Participants will explore key changes across areas such as chronic kidney disease, hypertension, anemia, and mineral and bone disorders.

275 Next Generation Dialyzers

1.0 CH

Kelly Davis, MSN, APRN, CNN

This session will provide a comprehensive overview of dialysis membrane types and blood purification therapies, highlighting their roles in removing toxins and managing complex clinical conditions. Participants will explore the characteristics and clinical applications of advanced technologies, including medium cut-off dialyzers for enhanced clearance of middle molecules, biofunctional membranes for improved biocompatibility and inflammatory control, and sepsis filters used in critical care settings. Emphasis will be placed on the nursing perspective, with practical guidance on device setup, patient monitoring, interdisciplinary teamwork, and patient education to ensure safe and effective treatment. The session will examine key research findings, such as the CONVINCE trial, and emerging trends in nephrology nursing, empowering nurses to apply evidence-based practices and stay current in this evolving field.

5:15 pm ~ 6:15 pm

Specialty Practice Networks (SPN)

Sessions (281-285)

(Contact Hours To Be Determined)

281 Home Therapies SPN

Dialysis on Screen: Hollywood's Role in Home Dialysis Adoption

282 Acute Care SPN

Navigating the New CDC Hepatitis B Guidelines

283 Hemodialysis SPN

Teach, Touch, Transform: Nursing Connections That Last

284 Administration SPN

Stronger Together: Optimizing the RN/LPN Partnership in Dialysis Units.

285 Transplantation SPN

Modernization of the Organ Transplant System: Increasing Kidney Donation and All that Jazz



Specialty Practice Networks

CH = ANCC Contact Hour

8:00 pm ~ 10:00 pm

290 Dance Party

Enjoy an evening of music, dancing, and light refreshments with friends and colleagues at the symposium dance party.



Symposium Agenda

Monday, April 27, 2026

7:00 am ~ 8:30 am

301 Breakfast Symposium
Pending corporate support

8:45 am ~ 10:30 am

Exhibits/Poster Sessions/Refreshments

10:30 am ~ 11:30 am
Concurrent Sessions (311-314)

311 Legal Readiness: What Every Nurse Should Know About Malpractice

1.0 CH

Sue Cary, MN, RN, ANP-BC, CNNe
Debra Hain, PhD, APRN, AGPCNP-BC,
PMHNP-BC, CNN-NP, FAAN, FAANP, FNKF

Nephrology nurses—both registered nurses and advanced practice providers—face legal risk not only as individuals but also through association with their employers. In many malpractice cases, nurses are named directly or drawn into litigation because they were involved in a patient's care during a key event. Moreover, dialysis providers are not always protected by malpractice caps in certain states, making them and the nurses they employ more attractive legal targets. Understanding this exposure is essential for legal preparedness.

312 Compassion without Fatigue

1.0 CH

Andrea Dalton, MA, MT-BC

This session will cover how compassion fatigue arises from emotional residue of patient care. Burnout stems from systemic stress: workload, lack of control, moral distress. Nephrology nurses experience both. Trauma-informed care and self-care practices support nephrology nurses.

313 Protecting the Lifeline: Education and Management of Vascular Access Issues

1.0 CH

Jeremy Gitomer, MD

Vascular access is a lifeline for patients on dialysis, yet it demands vigilant care, early detection, and coordinated management to prevent complications. Session participants will deepen their understanding of access types, learn how to recognize and manage complications early, and how to implement best practices through education, maintenance, and multidisciplinary collaboration. The session will conclude with a forward-looking view on innovation in vascular care.

314 Safe Water: Keeping Patients Safe in Changing Times - Expert

1.0 CH

Bonnie Greenspan, MBA, BSN, RN
Glenda Payne, MS, RN, CNN, DHL (Hon)

This session will enhance understanding of the essential components involved in water treatment and dialysate preparation for hemodialysis. Participants will explore the critical importance of adhering to maximum standards to ensure patient safety, especially when performing hemodiafiltration, which carries increased risks if water or dialysate quality is compromised. Through practical insights, participants will learn to identify “drift” — deviations from established policies and procedures — within your practice setting.

11:45 pm ~ 1:15 pm

320 Nephrology Nurse Recognition Luncheon

Network with friends and celebrate the professional accomplishments of colleagues as the ANNA Outstanding Achievement Award winners are announced. The luncheon also will include the annual ANNA business meeting, induction of the 2026-2027 Board of Directors, and a message from incoming ANNA President Michelle Gilliland.

1:30 pm ~ 2:30 pm
Concurrent Sessions (321-324)

321 Writing for Publication: From Idea to Article

1.0 CH

Beth Ulrich, EdD, RN, FACHE, FANNA, FAONL,
FAAN

In this workshop, Nephrology Nursing Journal Editor-in-Chief Beth Ulrich reviews the manuscript development, peer review, and publication processes and NNJ Editorial Board members provide tips for developing a plan for writing and submitting a manuscript for publication.

322 Your Role in Supporting the ESKD Life Plan and Dialysis Access Planning

1.0 CH

Debra Brouwer-Maier, RN, CNN
Karthik Ramani, MD, MBA, MHA, CPE, FACP,
FASN, FASDIN
Victoria Teodorescu, MD, MBA, RVT, FACS

This session will equip healthcare professionals with the knowledge and skills needed to support patients with chronic kidney disease who choose dialysis as their treatment modality. Emphasis will be placed on the nephrology nurse's role in creating an optimal ESKD Life Plan and ensuring timely, effective dialysis access. Participants will explore access types, placement techniques, monitoring and intervention to prevent and manage complications.

CH = ANCC Contact Hour

Symposium Agenda

Monday, April 27, 2026

323 The Acid Test: Understanding Acid-Base Imbalance – Novice to Expert

1.0 CH

Mark Smith, MD

Acid-base balance is a cornerstone of homeostasis. Its disturbance in chronic kidney disease (CKD) contributes not just to biochemical abnormalities but to real-world morbidity, including bone disease, muscle wasting, and accelerated renal decline. Session participants will explore the physiology of acid-base regulation, understand how CKD disrupts this equilibrium, and learn the clinical strategies to diagnose, manage, and monitor metabolic acidosis in CKD—from standard alkali therapies to emerging dietary and pharmacologic innovations.

324 Stepping into the Role: Practicing as a Nephrology Nurse Practitioner

1.0 CH, Rx

Katerina Jones, DNP, APRN, ANP-C, CNN-NP

Transitioning into nephrology as a nurse practitioner (NP) requires shifting into the advanced practice role of independently assessing, diagnosing, managing, and treating patients with kidney disease. This session will provide a high-yield, practical overview of how NPs practice across chronic kidney disease management, dialysis care, and hospital nephrology, emphasizing clinical reasoning, medication management, and patient-centered care. For NPs transitioning from dialysis registered nurse roles, the session will clarify how responsibilities expand from executing care plans to developing them. For experienced NPs, it will offer strategies to refine nephrology practice and align with current evidence to improve patient outcomes.

2:45 pm ~ 3:45 pm
Concurrent Sessions (331-334)

331 Salt Swings and Fluid Shifts: Sodium Disorders in Dialysis Care – Novice to Expert

1.0 CH, Rx

Stephanie McQuillin, APRN, FNP-C

Sodium balance plays a pivotal role in dialysis patient health, yet sodium disorders are common, often overlooked, and linked to significant complications. This session will explore the physiology of sodium in dialysis, dissect hyponatremia and hypernatremia, examine how dialysate sodium prescription influences fluid and osmotic balance, and outline preventative monitoring strategies. Participants will gain actionable insights for personalized dialysate prescription and patient education to safeguard against the dangers of sodium imbalances.

332 Kidney Stones

1.0 CH

David Goldfarb, MD

Kidney stones are a common and painful condition that can recur without proper management. This session will provide nephrology nurses with an overview of kidney stone types, prevention strategies, and treatment options, along with practical tools for educating patients on lifestyle changes to reduce recurrence risk.

333 Cardiorenal Syndrome through a Nursing Lens

1.0 CH, Rx

Naveed Masani, MD, FACP, FASN

Cardiorenal syndrome is a growing burden in the healthcare system that nurses need to understand. The lecture will focus on incidence and prevalence, pathophysiology, clinical presentation, diagnostic criteria, medical management, and nursing goals.

334 Navigating Perimenopause and Menopause in Women with Kidney Disease and Those Caring for Them

1.0 CH, Rx

Julia Morin, WHNP-BC

Perimenopause and menopause can significantly affect women with chronic kidney disease, impacting symptom burden, cardiovascular health, and overall well-being. This session will help nephrology nurses recognize menopausal symptoms, understand how hormonal changes interact with kidney disease, and apply supportive care strategies to improve patient quality of life during this life stage.

4:00 pm ~ 5:00 pm
Specialty Practice Network (SPN)
Sessions (341-344)
(Contact Hours To Be Determined)

341 Pediatric SPN

From Cute to Critical: What to Watch for with Pediatric Dialysis

342 Chronic Kidney Disease SPN

Anemia Management

343 Advanced Practice SPN

Clinical Challenges of Acute Kidney Management

344 Educator SPN

Generational Nurturing and Training: The Nephrology Nurse



Specialty Practice Networks

5:30 pm

350 Enjoy New Orleans!

Stay tuned! Information about optional tours will be provided to symposium registrants.

CH = ANCC Contact Hour

Symposium Agenda

Tuesday, April 28, 2026

6:30 am ~ 7:00 am
Continental Breakfast

8:00 am ~ 9:00 am
General Session
401 Health Access
1.0 CH

Nephrology Nursing Culture, Community, & Connection Committee (NNCCC)

In the session, the speakers will be presenting a groundbreaking approach to learning that focuses on highlighting the impact of structural inequities on an individual's experience with chronic kidney disease (CKD) and their treatment decisions. By using this innovative learning method, the presenters aim to provide participants with a deeper understanding of the specific challenges encountered by individuals with CKD. Furthermore, the objective is to develop a comprehensive learning strategy that can be adopted by ANNA chapters to effectively meet their educational objectives.

9:15 am ~ 10:15 am
General Session
402 Health Policy Update
1.0 CH

Donna Bednarski, MSN, RN, ANP-BC, CNN, FANNA
Donna Painter, MS, BSN, CNN, FANNA
Jim Twaddell, MA, BS,

In this session, participants will receive updates on the latest health policies that directly affect nephrology nursing. These expert speakers will discuss legislative and regulatory policies that can significantly impact different aspects of nursing practice, education, and patient care in the field of kidney disease. By attending this session, participants will gain valuable insights into important developments that are crucial for the nursing profession in kidney care and the overall well-being of patients.

10:30 am ~ 11:30 am
General Session

403 Artificial Intelligence in Nephrology Nursing: Enhancing Care, Precision, and Practice
1.0 CH

Rebecca Love, MSN, BS, RN, FIEL

As artificial intelligence (AI) continues to transform healthcare, nephrology nursing stands at the forefront of this technological evolution. From predictive analytics to decision support tools and patient monitoring systems, AI offers opportunities to improve patient outcomes, streamline workflows, and reduce preventable complications in renal care. This session will explore current and emerging uses of AI in nephrology nursing, highlight practical applications, and address ethical, legal, and professional implications. Nephrology nurses will gain insights into how AI can complement clinical judgment, optimize dialysis care, and personalize treatment plans—all while maintaining human-centered, evidence-based practice.

11:45 am ~ 12:45 pm

Closing Session

404 Progressive Chronic Kidney Disease in the Ozempic Era: Impact of Obstructive Sleep Apnea and Gut Dysbiosis
1.0 CH

Shannon Guthrie, RD
W. Joseph Newman, MD
Beverly Storck, RN, MSN



Shannon Guthrie W. Joseph Newman Beverly Storck

This session will explore the evolving landscape of chronic kidney disease (CKD) management in light of emerging therapies and comorbid conditions. This session will examine how GLP-1 receptor agonists, such as Ozempic®, are influencing kidney outcomes and metabolic health. Attention will be given to the role of obstructive sleep apnea and gut dysbiosis as underrecognized yet significant contributors to CKD progression. Using an interdisciplinary lens, current evidence, pathophysiologic mechanisms, and implications for early detection, patient education, and personalized care strategies will be reviewed. Attendees will gain insights into integrating novel therapies and comorbidity management into routine nephrology practice.



CH = ANCC Contact Hour

On Demand Sessions

In addition to the live sessions featured during the symposium program, the following sessions will be pre-recorded and available on demand via the ANNA Online Library. All on-demand session content is included with full symposium registration; full symposium registrants also may redeem up to 13.0 ANCC contact hours for on-demand sessions. Additional contact hours for on-demand sessions are available for purchase via the ANNA Online Library. (Note: Contact hours are to be determined; each session will offer a maximum of 1.0 contact hour.)

OD01 Motivational Interviewing

Marijo Johnson, MSN, RN, CNN, FANNA

This session will discuss motivational interviewing, a powerful way to have conversations that help patients find their own motivation to change. The key techniques such as open-ended questions, rolling with resistance, and encouraging patients to express why they want to make a change will be reviewed. Case studies that combine motivational interviewing with self-management skills will be discussed.

OD02 Mastering Time Management: Boosting Efficiency in a Busy Nephrology Clinic

Mary Herrick, BSN, RN

Participants will learn how to prioritize clinical responsibilities, delegate effectively within multidisciplinary teams, and streamline routine processes. The session will explore how to schedule more efficient dialysis rounds, optimize workflow with limited tools, and protect time for personal well-being and job satisfaction.

OD03 Uniqueness of Nephrology Nursing - Novice

Lesley Dinwiddie, MSN, FNP, CNNe

Nephrology nursing is a highly specialized and uniquely challenging field that focuses on caring for patients with kidney-related health issues, including chronic kidney disease, dialysis treatment, and kidney transplantation. What sets nephrology nursing apart is the deep, ongoing relationship nurses often develop with their patients, many of whom require long-term, life-sustaining treatments like hemodialysis or peritoneal dialysis multiple times per week.

OD04 Beyond Clinical Skills: Emotional Intelligence for Nephrology Nurses, Preceptors, and Policy Influencers

Amy Maguire, DNP, MSN, RN, CDN

Jessica St. Clair, MSN, RN, CNN

In nephrology, where patients often face chronic, life-altering conditions, emotional intelligence is as vital as clinical expertise. This session explores how nephrology nurses and advanced practice providers can use emotional intelligence to elevate patient care, enhance preceptorship, and influence health policy.

OD05 From Factory to Patient: The Delivery of Deliverables in the United States

Lousia Freiburger, RN, CDN

Kristin Larson, MSN, RN, AGNP-BC, CNN, FANNA

This presentation will state the supply and distribution issues of supplies and medications used for persons with kidney disease.

OD06 From Chairside to Policy: Empowering Nephrology Nurses as Advocates for Change - Novice

Donna Bednarski, MSN, RN, ANP-BC, CNN, FANNA

Donna Painter, MS, BSN, CNN, FANNA

This interactive, beginner-level session will empower nephrology nurses with the knowledge and confidence to step into the world of health policy and advocacy. Participants will learn how federal and state policies impact kidney care delivery, funding, patient access, and explore and how to engage effectively with policymakers.

OD07 Balancing Act: Rethinking Approaches to Dietary Phosphorus and Potassium Management in Chronic Kidney Disease – Novice to Expert

Katerina Jones, DNP, APRN, ANP-C, CNN-NP

Managing dietary phosphorus and potassium in patients with chronic kidney disease (CKD) requires balancing evidence-based restrictions with the patient's nutritional needs and quality of life. This session will explore physiologic mechanisms contributing to hyperkalemia and hyperphosphatemia in CKD, while examining differences in bioavailability between natural and additive sources of potassium and phosphorus. Participants will learn about medications that contribute to phosphate burden, as well as those used in managing hyperkalemia and hyperphosphatemia. Practical strategies will be discussed to help clinicians guide patients in modifying their diets to maintain potassium and phosphate control while promoting greater dietary freedom and improved nutritional status.

On Demand Sessions

OD08 Foundations of Acid-Base and Mineral Bone Disorders in Chronic Kidney Disease: Real-World Tools for the Novice Nephrology Nurse - Novice

Kristie L'Ecuyer, MSN, RN

Acid-base balance and chronic kidney disease-mineral and bone disorder (CKD-MBD) are core clinical concepts that can feel overwhelming for nurses new to nephrology. This session will provide a clear, practical introduction tailored to novice nurses working in dialysis units and CKD clinics.

OD09 Walking the Tight Rope: Advanced Fluid Management in Challenging Nephrology Patients

Amanda Rivenbark, BSN, RN

Fluid management in patients with end-stage kidney disease is a critical and complex balancing act, especially in those with comorbidities, hemodynamic instability, or non-adherence challenges. This session is designed for nurses seeking to refine their approach to individualized, data-driven fluid management in complex patient scenarios. Attendees will learn how to manage the nuances of dry weight assessment, blood pressure fluctuations, and intradialytic symptoms.

OD10 Peritoneal Dialysis – Novice

Allison Taylor, RN, CPDN

This session will provide a foundational overview of peritoneal dialysis (PD). Participants will learn the principles of PD, catheter types and placement, dialysate composition, and the differences between continuous ambulatory PD (CAPD) and automated PD (APD). Emphasis will be placed on patient selection, education, infection prevention, and the nurse's role in supporting self-management and early complication recognition. This session will equip nurses with the essential knowledge to provide safe, effective, and patient-centered PD care.

OD11 Patient Perspectives: Living Kidney Disease – Stories of Struggle, Strength, and Survival

Mary Baliker, BS

This powerful session will center on the voices of those who live with kidney disease every day. Through short patient-recorded stories, attendees will hear firsthand accounts of the challenges and triumphs experienced by individuals on dialysis, post-transplant, or living with chronic kidney disease. These narratives bring to life the emotional, physical, and financial realities that patients and their families face—from job loss and limited mobility to strained relationships and altered life goals.

OD12 Nurturing a Spirit of Inquiry: Building Evidence-Based Practice from Curiosity to Clinical Change

Tara O'Brien, PhD, RN, CNE, FAAN

Curiosity is the catalyst for clinical innovation. This dynamic session will explore how cultivating a spirit of inquiry lays the foundation for evidence-based practice in nephrology nursing. Participants will learn to transform everyday clinical questions into structured inquiries using the PICOT format, enabling the development of focused, relevant research questions that drive practice improvement. Attendees will leave empowered to initiate and lead practice change, grounded in curiosity and guided by evidence.

OD13 Care Considerations for Military Veterans Receiving Nephrology Nursing Care

Kelly Dyar, EdD, RN, CNN, CNE

Brenda Elliott, PhD, RN, CNE, ANEF

This session will address the critical need for greater awareness and preparation among nephrology nurses caring for veterans. It will begin with an overview of military culture and its impact on long-term health, followed by a discussion of common physical and mental health issues affecting veterans. Presenters will share findings from a current, grant-funded national study examining nephrology nurses' knowledge, attitudes, confidence, and comfort in caring for veteran patients.

OD14 Building the Right Team and Navigating the Institutional Review Board and Quality Improvement (QI) Process: Key Steps to Successful QI, Evidence-Based Practice, and Research in Nephrology Nursing

Shushanne Wynter-Minott, DNP, APRN, FNP-BC, CRC, CCDS-O

This session will provide a clear roadmap for developing and implementing successful quality improvement (QI), evidence-based practice, and research projects. Emphasis will be placed on building a strong team with clear roles and expectations for success. Nurses will gain practical tools to design meaningful projects while meeting regulatory requirements.

Register by February 9 for the best rates! annanurse.org/symp26

Invited Faculty

Cynthia Adorno, RN, MSN, Division Director Dialysis, Health Trust Workforce Solutions, Myrtle Beach, SC (Session 131)

Lisa Ales, MSN, FNP-BC, FNP-C, CNN, Senior Principal Medical Liaison, Vantive, Cleveland, TN (Session 261)

Nicole Ali, MD, Medical Director, Kidney & Pancreas Transplant, NYU Langone Health, New Hyde Park, NY (Session 273)

Tracy Anderson-Haag, PharmD, BCPS, BCTXP, Clinical Pharmacy Specialist, Kidney Transplantation, Hennepin County Medical Center, Blaine, MN (Session 262)

Mary Baliker, BS, Healthcare Consultant, Baliker Healthcare LLC, Middleton, WI (Session OD11)

Rasheed A Balogan, MD, FACP, FASN, FMCP, HP, (ASCP), Professor of Medicine, Professor of Pathology, Harrison Distinguished Teaching Professor of Nephrology, Regional Medical Director, UVA Ambulatory Dialysis Program, Medical Director, Apheresis Unit & Extracorporeal Therapies, University of Virginia Health System, Charlottesville, VA (Session 254)

Donna Bednarski, MSN, RN, ANP-BC, CNN, FANNA, Nurse Practitioner Dialysis Access, Detroit Medical Center, Canton, MI (Sessions 402, OD06)

Katelynn Booth, MSN, RN, CPHQ, Quality Improvement Specialist, Quality Insights, Roanoke, VA (Session 245)

Jennifer Branch, DNP, APRN, AGNP-C, CNN-NP, CCTC, FNKF, Nurse Practitioner, The University of Kansas Health System, Kansas City, MO (Sessions 152, 274)

Deborah Brouwer-Maier, RN, CNN, Vascular Access Marketing Manager, Transonic Systems, Inc., Lansdale, PA (Session 322)

Tammy Carmean, MBA-HM, BSN, RN, CMSRN, Home Therapy Program Manager, Fresenius Medical Care - Mishawaka Home Therapy, Mishawaka, IN (Session 271)

Sue Cary, MN, RN, ANP-BC, CNNe, Nurse Practitioner, Legal Medical Expert Witness, Self-Employed, Greers Ferry, AR (Session 311)

Nancy Colobong Smith, MN, ARNP, ANP-BC, CNN, FANNA, Immediate Past President ANNA, University of Washington, Seattle, WA (Session 122)

Matthew Cooper, MD, Chief of Transplantation, Medical College of Wisconsin, Milwaukee, WI (Session 255)

Christine Corbett, DNP, CNP, FNP-BC, CNN-NP, ACHPN, FNKF, FANNA, Executive Director, Coalition for Supportive Care of Kidney Patients; Assistant Research Professor; Nurse Practitioner Kidney Palliative Care, George Washington University, La Luz, NM (Session 243)

Andrea Dalton, MA, MT-BC, Director, Center for Trauma Informed Innovation, University Health, Lee's Summit, MO (Session 312)

Kelly Davis, MSN, APRN, CNN, IPS Patient Safety Manager, Fresenius Kidney Care, Goreville, IL (Session 275)

Lesley Dinwiddie, MSN FNP CNNe, Retired, Cary, NC (Session 253)

Katherine Duberg, BA, George Washington University, San Luis Obispo, CA (Session 243)

Kelly Dyar, EdD, RN, CNN, CNE, Associate Professor and Director Inquiry & Scholarship, University of West Georgia, Douglasville, GA (Session OD13)

Brenda Elliott, PhD, RN, CNE, ANEF, Associate Professor and Director, Graduate Program in Nursing, Messiah University, Mechanicsburg, PA (Session OD13)

Donna Ferguson, BSN, RN, Home Therapy Charge Nurse, Fresenius Medical Care - Mishawaka Home Therapy, Granger, IN (Session 271)

Leah Foster Smith, MSN, APRN, FNP-BC, CNN-NP, FNKF, FANNA, FAANP, Director of Advanced Practice Providers; Chief Education Officer, Metrolina Nephrology Associates; Interactive Nephrology, Mooresville, NC (Session 252)

Louisa Freiburger, RN, CDN, Area Manager of Education, Liberty Administrative Services, LLC, Big Lake, AK (Session OD05)

Jeremy Gitomer, MD, Board certified in Internal Medicine, Pediatric and Adult Nephrology, Medical Director, Kidney and Hypertension Clinic of Alaska, Belle Vista, AR (Session 313)

Cornelia Gogan, MSW, LMSW, Transformational Life Coach, Social Worker, Liberty Administrative Services, LLC, Old Town, ME (Session 151)

David S. Goldfarb, MD, Professor of Medicine & Physiology, Clinical Chief, Nephrology Division, NYU Grossman School of Medicine, NYU Langone Health, Hastings-on-Hudson, NY (Session 332)

Bonnie Greenspan, RN, BSN, MBA, BBG Consulting, LLC, Alexandria, VA (Session 314)

Shannon Guthrie, RD, Registered Dietician, Fresenius Medical Care/Sound Nutrition Consulting, LLC, Beaufort, NC (Session 404)

Debra Hain, PhD, APRN, AGPCNP-BC, PMHNP-BC, CNN-NP, FAAN, FAANP, FNKF, Christine E Lynn College of Nursing Professor, DNP Program Director, Co-Graduate Coordinator AGNP Concentration, Florida Atlantic University, Boca Raton, FL (Session 311)

Mary Haras, PhD, MBA, APN, NP-C, CNN, FANNA, Professor, Berkley School of Nursing at Georgetown University, Bradenton, FL (Session 243)

Melissa Hargett, RN, Area Home Therapy Manager, US Renal Healthcare, Belton, SC (Session 241)

Mary Herrick, BSN, RN, Clinical Educator, DaVita, Gainesville, FL (Session OD02)

Marijo Johnson, MSN, RN, CNN, FANNA, Assistant Nurse Manager, Wyoming Department of Veterans Affairs, Muskegon, MI (Session OD01)

Justin Jones-Fosu, Owner, Work Meaningful, LLC, Charlotte, NC (Session 170)

Katerina Jones, DNP, APRN, ANP-C, CNN-NP, Nephrology Nurse Practitioner; Provider Systems and Training Specialist, Metrolina Nephrology Associates, Cramerton, NC (Session 324)

Judy Kauffman, DNP, RN, CNN, Program Manager, Cellular Therapies & Stem Cell Transplant, University of Virginia Health, Verona, VA (Session 112)

Peter Kennealey, MD, Professor of Surgery, University of Colorado, School of Medicine, Aurora, CO (Session 255)

Lisa Zokas Kindy, JD, Counselor, Tampa, FL (Session 244)

Jayakrishnakamal Konijeti, MD, Nephrologist and Internal Medicine, American Health Network, New Albany, IN (Session 331)

Invited Faculty

Melanie Kreitzer, RN, CNN, Central Anemia Manager, DaVita, North Salt Lake, UT (Session 152)

Kristin Larson, MSN, RN, AGNP-BC, CNN, FANNA, Adjunct Professor, Roseman University, Salt Lake City, UT (Session 244)

Kristi L'Ecuyer, MSN, RN, University of Kansas Health System, Shawnee, KS (Session OD08)

Kristie Lemmon, BS, BA, MBA, Executive Director, Alaska Kidney Patients Association, Inc, Anchorage, AK (Session 265)

Rebecca Love, RN, BS, MSN, FIEL, Nurse Executive, Speaker, Author, President of SONSIEL: The Society of Nurse Scientists, Innovators Entrepreneurs & Leaders, Chief Nursing Officer, QuadriVia.Ai, Marblehead, MA (Session 403)

Amy Maguire, DNP, MSN, RN, CDN, Senior Manager of Clinical Education, Learning Content and Solutions, Fresenius Medical Care, Fernandina Beach, FL (Session OD04)

Naveed Masani, MD, FACP, FASN, Medical Director, Dialysis Services,, Mineola, NY (Session 333)

Patricia McCarley, MSN, RN, ACNP-BC, CNN, Nephrology Nurse Consultant, Nashville, TN (Session 111)

Stephanie McQuillin, APRN, FNP-C, Nurse Practitioner, Kidney and Hypertension Clinic of Alaska, Palmer, AK (Session 331)

Kasadi Moore, RN, MSNI, Division Director Dialysis, Healthtrust Workforce Solutions, South Jordan, UT (Session 131)

Amanda Morelli, MSN, RN, CNN, Quality Improvement Specialist, Quality Insights, Midlothian, VA (Session 245)

Julie Morin, WHNP-BC, Women's Health Nurse Practitioner, NoreHealth, Marietta, GA (Session 334)

Connie Nelson, RN, MBA, BSN, Senior Director, Clinical Transformation, DaVita, Las Vegas, NV (Session 141)

W Joseph Newman, MD, Nephrologist, Eastern Nephrology Associates, Trent Woods, NC (Session 404)

Megan Nolan, RN, Palliative Care Manager, Northwest Kidney Center, Seattle, WA (Session 264)

Tara O'Brien, PhD, RN, CNE, FAAN, Clinical Assistant Professor and Assistant Director, Doctor of Nursing Education Program, The Ohio State University, College of Nursing, Fort Myers Beach, FL (Session OD12)

Donna Painter, MS, BSN, CNN, FANNA, Regulatory Surveyor, National Dialysis Accreditation Commission, Corsicana, TX (Session OD06) 402

Heather Paradis, Director, Installation and Logistics - Vivonic, Fresenius Medical Care, Council, ID (Session 121)

Glenda Payne, MS, RN, CNN, DHL (Hon), Principal, National Dialysis Accreditation Commission, Duncanville, TX (Session 314)

Shawn Pleasant, BSN, RN, CDN, Senior Regulatory Manager, Fresenius Medical Care, Marthaville, LA (Session 111)

Karthik Ramani, MD, MBA, MHA, CPE, FACP, FASN, FASDIN, Clinical Associate Professor-Nephrology and Internal Medicine, Medical Director, VAST (Vascular Access Services Team), Director, Interventional Nephrology Fellowship, The University of Michigan, Ann Arbor, MI (Session 322)

Sandra Reeves, BSN, RN, CNN, Kidney Smart Educator, Home Training Educator, DaVita, Asheville, NC (Session 314)

Amanda Rivenbark, BSN RN, Senior Director, Clinical Services Initiatives, Fresenius Medical Care, Rose Hill, NC (Session OD09)

Mary Schira, PhD, RN, Retired Associate Professor, Mansfield, TX (Session 263)

David Serur, MD, Medical Director, Kidney Transplantation, HUMC, Englewood, NJ (Session 255)

Mark Smith, MD, Nephrologist, Kidney and Hypertension Clinic of Alaska, Anchorage (Session 323)

Felicia Speed, PhD, LMSW, Vice President, Social Work Services, Fresenius Medical Care, Pelzer, SC (Session 154)

Jessica Strong St. Clair, MSN, RN, CNN, Senior Manager of Clinical Education, Learning Content & Solutions, Fresenius Medical Care, Grand Forks, ND (Session OD04)

Wendy St. Peter, PharmD, FCCP, FASN, FNKF, Professor, College of Pharmacy, University of Minnesota, Investigator, Chronic Disease Research Group and United States Renal Data System, University of Minnesota, Brooklyn Park, MN (Session 142)

Beverly Storck, MSN, RN, Registered Nurse, Fresenius Medical Care, Greenville, NC (Session 404)

Brianna Sullivan, MSN, APRN, FNP-BC, Assistant Vice President, Dialysis, Health Trust Workforce, Franklin, KY (Session 131)

Allison Taylor, RN, CPDN, National Director, Home Clinical Services, DaVita, Saginaw, MI (Session OD10)

Victoria Teodorescu, MD, MBA, RVT, FACS, Professor of Surgery, Division of Vascular Surgery and Endovascular Therapy, Department of Surgery, Emory University School of Medicine, Atlanta, GA (Session 322)

Lucy Todd, MSN, ACNP, CNNe, FANNA, Retired, Asheville, NC (Session 251)

Jim Twaddell, MA, BS, Senior Policy Advisor, Venable, LLP, Washington, DC (Session 402)

Beth Ulrich, EdD, RN, FACHE, FANNA, FAONL, FAAN, Professor, Department of Graduate Studies

Editor-in-Chief, Nephrology Nursing Journal, University of Texas Medical Branch School of Nursing, Pearland, TX (Session 321)

Jennifer Vavrinchik, MSN, RN, CNN, Chief Operating Officer, National Dialysis Accreditation Commission, Naples, FL (Session 121)

Emily Vellano, MSW, LCSW, Senior Director of Social Work, DaVita Kidney Care, Denver, CO (Session 141)

Catherine Wells, DNP, ACNP-BC, CNN-NP, FNKF, Assistant Professor, Nephrology Nurse Practitioner, University of Mississippi Medical Center, Department of Medicine, Division of Nephrology, Jackson, MS (Session 132)

Wendy Wright, DNP, ANP-BC, FNP-BC, FAANP, FAAN, FNAP, Adult/Family Nurse Practitioner Owner, Wright & Associates Family Healthcare, Bedford, NH (Session 242)

Shushanne Wynter-Minott, DNP, APRN, FNP-BC, CRC, CCDS-O, Director of Nurse Practitioner (NP) Education, DaVita Integrated Kidney Care, Loxahatchee, FL (Session OD14)

Alicia Zerkle, BS, RN, Senior Manager, Clinical Methods and System, Fresenius Medical Care, Pegram, TN (Session 153)

Hotel and Travel Info

Hotel Reservations

The Hilton New Orleans Riverside is the official hotel for the 2026 Symposium.

Hilton New Orleans Riverside

Two Poydras Street
New Orleans LA 70130

Room Rate: \$269 single/double occupancy, \$299 for triple occupancy, and \$329 for quads + taxes (currently 16.75 %) and a \$3.00 occupancy tax per night

Check In: 4:00pm **Check Out:** 11:00am

Online Reservations: annanurse.org/symp26

Phone Reservations: (504) 561-0500

The conference rates are available until March 26, 2026, or until rooms sell out. Reservations made after this date are subject to space and rate availability. (Taxes subject to change without notice.)

Note: Only make your hotel reservations via the ANNA reservation link or hotel phone number provided above. ANNA does not use a housing agency. No one from ANNA or the conference hotel will call or email you to make a hotel reservation; ignore any communications you may receive from outside agencies.

Hotel Parking

Self-parking is available in the garage for \$35 per day with in and out privileges. Valet is available for \$58 (rates subject to change).

Airport/Transportation

Louis Armstrong New Orleans International Airport (MSY) is about 25 minutes away from the Hilton New Orleans Riverside. Transportation between the hotel and the airport is approximately \$37-\$53 one way via ride-share.

Weather

A typical day in New Orleans in April has a daytime high in the mid-70s and a low in the mid-50s. Temperatures in hotel meeting rooms may vary, so please remember to pack layered clothing. We suggest you bring comfortable walking shoes for your conference activities.



Registration & General Information

Registration

Register at annanurse.org/symp26. In-person and livestream registration options are available. Livestream sessions are to be determined and will be announced closer to the conference date. Full symposium registrants (in-person and livestream) will have access to all recorded conference content.

All symposium communications will be sent via email. Please provide your email address when registering to ensure you receive your registration confirmation and other meeting communications.

All in-person pre-registrations must be received with payment by April 13, 2026. In-person registrations received after this date will be processed onsite.

Deals & Discounts

Register by February 9, 2026, for early bird rates. ANNA Members save \$125 on registration.

Register for the symposium and join ANNA – or renew your ANNA membership – for one low rate. Regular registration fees include a 1-year ANNA membership. (International registrants who register at the Regular rate receive a virtual international membership.)

Nursing Continuing Professional Development**

Gain ANCC contact hours for your professional development, recertification, and relicensure.

- Symposium* – 33.0 contact hours

*Additional ANCC contact hours may be available if corporate support is received for pending programs.

Sessions marked with **Rx** contain pharmacology content that can be applied toward pharmacology credit requirements.

ANNA urges participants to be aware of the ANCC NCPD contact hours requirements for relicensure in the states in which they hold a license.

American Nephrology Nurses Association is accredited as a provider of nursing continuing professional development by the American Nurses Credentialing Center's Commission on Accreditation (ANCC).

ANNA is a provider approved by the California Board of Registered Nursing, provider number CEP 17499.

As a designated Approved Provider by the American Board for Transplant Certification (ABTC), American Nephrology Nurses Association (ANNA) grants Category 1 Continuing Education Points for Transplant Certifications (CEPTC) for this offering. Approval #20004.

Online Library/Symposium Educational Materials

The ANNA Online Library (annanurse.org/library) provides extra value for your symposium registration.

- Full symposium registrants (in-person and livestream) receive free access to all conference sessions in the Online Library. Listen to sessions you may have missed or revisit ones you found interesting. Content will be available approximately 3 weeks after the conference.
- Session/speaker reference materials will be available to view/download/print in the Online Library prior to the conference.
- Evaluate sessions online to redeem your contact hours.
- After completing the symposium/session evaluation process, access your contact hour certificates in the Online Library any time.

Payment Policy

No registration will be processed unless full payment is received with the registration form. If you do not receive an email confirming your registration, please contact the ANNA National Office.

Refund Policy

No telephone cancellations will be accepted. Written notice of cancellation must be sent to the ANNA National Office (anna@annanurse.org, fax 856-218-0557). A \$50 administrative fee will be assessed on all cancellations received in writing and must reach the office no later than March 27, 2026. No refunds will be issued after this deadline. Membership fees are non-refundable. If ANNA finds it necessary to cancel or postpone this educational offering for any reason, including but not limited to low registration, strikes, pandemics, or acts of God, ANNA shall not be liable for registrant(s)' expenses.

Guests

Guest tickets (\$100 each) are available for the ANNA Dance Party. Guest tickets are limited to one per symposium registrant and entitle the guest to attend the gala/dance party only. Guests are not admitted to exhibits or any other sessions/events.

Media Release

ANNA occasionally uses photographs/video of ANNA meeting participants in its publications, website, social media, and promotional materials. By virtue of your attendance at the symposium, you agree to usage of your likeness in such material.

Questions

Contact ANNA:
annanurse.org/symp26
anna@annanurse.org
888-600-2662 or 856-256-2320

American Nephrology Nurses Association | REGISTRATION FORM

2026 National Symposium — April 25-28, 2026 — New Orleans, LA

4 easy ways to register.
Reserve your spot today!

Registrations will not be processed without payment. Send completed registration form with payment to ANNA in U.S. funds.



ONLINE
credit card payments only
annanurse.org/symp26



EMAIL
credit card payments only
anna@annanurse.org



FAX
credit card payments only
856-218-0557



MAIL (with payment)
ANNA Registration
Box 56
Pitman, NJ 08071-0056

If sending via UPS or Federal Express, send to:
ANNA National Office
200 East Holly Avenue
Sewell, NJ 08080



NAME		ANNA Membership #		
CREDENTIALS		<input type="checkbox"/> RN/NP <input type="checkbox"/> Non-RN		
PREFERRED ADDRESS <input type="checkbox"/> Personal <input type="checkbox"/> Business				
COMPANY (if work address)				
CITY	STATE/PROV	ZIP/POSTAL CODE	COUNTRY	
PREFERRED DAYTIME TELEPHONE <input type="checkbox"/> Personal <input type="checkbox"/> Business		Please indicate if you are: <input type="checkbox"/> Attending National Symposium for the first time		
EMAIL (required for confirmation)				
NICKNAME FOR BADGE				
REGISTRATION FEES		PAYMENT SUMMARY		
<p>Join ANNA / Renew ANNA Membership with Registration</p> <p>You must be an ANNA member in good standing at the time you register to qualify for the "Member" rate. To join ANNA (or renew your ANNA membership) when registering, choose the "Regular" registration rate.</p> <p>Fee includes 1-year ANNA membership (new or renewal)</p> <p>MEMBER REGULAR NONMEMBER</p>		<p>National Symposium \$ _____</p> <p>Daily \$ _____</p> <p>Guest Ticket (\$100) (Dance Party only) \$ _____</p> <p>TOTAL DUE \$ _____</p>		
IN-PERSON REGISTRATION OPTIONS		<input type="checkbox"/> Check enclosed Charge my: <input type="checkbox"/> Visa <input type="checkbox"/> Mastercard <input type="checkbox"/> Am. Express for the amount of \$ _____ ACCOUNT NUMBER _____ Expiration Date _____ Card Security Code: _____ (3-Digit code back of Visa & Mastercard 4-Digit code front of American Express.) Print Cardholder's Name _____ Signature _____		
<p>National Symposium</p> <p>Received by 2/9 <input type="checkbox"/> \$650 <input type="checkbox"/> \$775 <input type="checkbox"/> \$800</p> <p>Received 2/10-3/9 <input type="checkbox"/> \$700 <input type="checkbox"/> \$825 <input type="checkbox"/> \$850</p> <p>Received on/after 3/10 and onsite <input type="checkbox"/> \$750 <input type="checkbox"/> \$875 <input type="checkbox"/> \$900</p>				
<p>Daily Registration</p> <p>1-Day (check day) ___ Sat ___ Sun ___ Mon ___ Tues <input type="checkbox"/> \$310 <input type="checkbox"/> \$435 <input type="checkbox"/> \$460</p>				
<p>Guest Ticket for Dance Party</p> <p>Guest Name: _____ <input type="checkbox"/> \$100</p>				
LIVESTREAM REGISTRATION OPTIONS				
<p>National Symposium</p> <p>Received by 2/9 <input type="checkbox"/> \$525 <input type="checkbox"/> \$650 <input type="checkbox"/> \$675</p> <p>Received 2/10-3/9 <input type="checkbox"/> \$575 <input type="checkbox"/> \$700 <input type="checkbox"/> \$725</p> <p>Received on/after 3/10 and onsite <input type="checkbox"/> \$625 <input type="checkbox"/> \$750 <input type="checkbox"/> \$775</p>				
<p>Daily Registration</p> <p>1-Day (check day) ___ Sat ___ Sun ___ Mon ___ Tues <input type="checkbox"/> \$225 <input type="checkbox"/> \$350 <input type="checkbox"/> \$375</p>				
SESSION CHOICES: (to be completed ONLY if attending in-person meeting)				
Friday (4/24)	Saturday (4/25)	Sunday (4/26)	Monday (4/27)	
<p>7:15 pm</p> <p><input type="checkbox"/> 100 New Member/First Time/International Orientation</p> <p>8:00 pm</p> <p><input type="checkbox"/> 101 Movie Night</p>	<p>8:00 am</p> <p><input type="checkbox"/> 111 <input type="checkbox"/> 112 <input type="checkbox"/> 113 <input type="checkbox"/> 114</p> <p>9:15 am</p> <p><input type="checkbox"/> 121 <input type="checkbox"/> 122 <input type="checkbox"/> 123 <input type="checkbox"/> 124</p> <p>10:30 am</p> <p><input type="checkbox"/> 131 <input type="checkbox"/> 132 <input type="checkbox"/> 133 <input type="checkbox"/> 134</p> <p>11:45 am</p> <p><input type="checkbox"/> 141 <input type="checkbox"/> 142 <input type="checkbox"/> 143 <input type="checkbox"/> 144</p> <p>1:00 pm</p> <p><input type="checkbox"/> 150 Lunch Symposium (pending)</p> <p>2:30 pm</p> <p><input type="checkbox"/> 151 <input type="checkbox"/> 152 <input type="checkbox"/> 153 <input type="checkbox"/> 154</p> <p>4:30 pm</p> <p><input type="checkbox"/> 170</p> <p>5:45 pm</p> <p><input type="checkbox"/> 180</p>	<p>6:00 am</p> <p><input type="checkbox"/> 210 Walk</p> <p>7:15 am</p> <p><input type="checkbox"/> 220 Breakfast Symposium (pending)</p> <p>10:15 am</p> <p><input type="checkbox"/> 241 <input type="checkbox"/> 242 <input type="checkbox"/> 243 <input type="checkbox"/> 244 <input type="checkbox"/> 245</p> <p>11:30 am</p> <p><input type="checkbox"/> 251 <input type="checkbox"/> 252 <input type="checkbox"/> 253 <input type="checkbox"/> 254 <input type="checkbox"/> 255</p> <p>12:30 pm</p> <p><input type="checkbox"/> 260 Box Lunch</p> <p>1:45 pm</p> <p><input type="checkbox"/> 261 <input type="checkbox"/> 262 <input type="checkbox"/> 263 <input type="checkbox"/> 264 <input type="checkbox"/> 265</p>	<p>2:30 pm</p> <p><input type="checkbox"/> 230 Coffee Break – Exhibits/Poster Session</p> <p>4:00 pm</p> <p><input type="checkbox"/> 271 <input type="checkbox"/> 272 <input type="checkbox"/> 273 <input type="checkbox"/> 274 <input type="checkbox"/> 275</p> <p>5:15 pm</p> <p><input type="checkbox"/> 281 <input type="checkbox"/> 282 <input type="checkbox"/> 283 <input type="checkbox"/> 284 <input type="checkbox"/> 285</p> <p>8:00 pm</p> <p><input type="checkbox"/> 290 Dance Party</p>	<p>7:00 am</p> <p><input type="checkbox"/> 301 Breakfast Symposium</p> <p>10:30 am</p> <p><input type="checkbox"/> 311 <input type="checkbox"/> 312 <input type="checkbox"/> 313 <input type="checkbox"/> 314</p> <p>11:45 am</p> <p><input type="checkbox"/> 320 <input type="checkbox"/> 321 <input type="checkbox"/> 322 <input type="checkbox"/> 323 <input type="checkbox"/> 324</p> <p>2:45 pm</p> <p><input type="checkbox"/> 331 <input type="checkbox"/> 332 <input type="checkbox"/> 333 <input type="checkbox"/> 334</p> <p>4:00 pm</p> <p><input type="checkbox"/> 341 <input type="checkbox"/> 342 <input type="checkbox"/> 343 <input type="checkbox"/> 344</p> <p>5:30 pm</p> <p><input type="checkbox"/> 350 Enjoy New Orleans</p>
<p>Save time and register online at: annanurse.org/symp26</p>				

Emergency Contact Information

Name _____

Relationship _____

Cell _____

If any special disability or diet arrangements are needed, please attach a note of explanation.

All in-person pre-registrations must be received with payment by **April 13, 2026**.

In-person registrations received after this date will be processed onsite.