

ANNA Learning
Leading
Connecting
American Nephrology Nurses Association

National *Virtual* Symposium

May 2-5, 2021 • annanurse.org

*Learn
Collaborate
Network*

◆ Sunday, May 2 ◆

10:00 am - 10:15 am

Welcome & Opening Remarks

Loretta Jackson Brown, PhD, RN, CNN
ANNA Symposium Emcee

10:15 am - 10:30 am

100 Opening Ceremonies / ANNA President's Address

Lillian Pryor, MSN, RN, CNN
2020-2021 ANNA President

10:30 am - 11:30 am

Janel Parker Memorial Session**110 Navigating the New Normal with I.D.E.A.S. (Inclusion, Data, Equity, Accountability, and Systems Change)****1.0 CH**

G. Rumay Alexander, EdD, RN, FAAN



Leaders at all levels are responsible for fostering teamwork and reaching “across the aisle” to promote inclusion and unity. Dr. Alexander, who has served as Chief Diversity Officer and Associate Vice Chancellor at the University of North Carolina-Chapel Hill, has vast experience in what that means, and how we, as nurses, need to consider our roles in fostering a culture that is diverse and inclusive of other people, other ideas, and other ways of doing things. Dr. Alexander will provide insights and strategies that we can all use to build our own leadership practices.

11:30 am - 11:45 am

Break

11:45 am - 12:45 pm

Concurrent Sessions (111-113)**111 The Nephrology Nurse's Role in Safe Opioid Prescription/Practices****1.0 CH, 1.0 Rx**

Loretta Jackson Brown, PhD, RN, CNN

Patients with chronic kidney disease are more likely to be prescribed opioids for pain associated with chronic conditions and comorbidities such as diabetes and hypertension. This session will review the recommendations in the *CDC Guideline for Prescription of Opioids for Chronic Pain*, which will assist nephrology nurses to provide safer and more effective chronic pain treatment options, improve opioid prescribing practices, and reduce the number of patients with opioid use disorder, opioid misuse, or opioid-related harm.

112 Urgent Start Peritoneal Dialysis (PD): What Nurses Need to Know**1.0 CH, 0.5 Rx**

Lucy Todd, MSN, ACNP-BC, CNN

Urgent start PD is being used increasingly for individuals in need of acute dialysis. This session will provide an overview of urgent start PD, including when it should be introduced, for which patients, nursing implications, patient care requirements, and the pathophysiologic changes associated with this treatment modality. The takeaway will be an understanding of the differences among urgent start, early start, and traditional start PD.

113 Baxter PD Excellence Academy ~ A Blueprint for the PD Nurse**1.0 CH**

Brenda Wiggins, BSN, RN

A how-to guide on acquiring organizational skills and tips to improve workflow when managing PD patients. Learn how to effectively manage your time, build a nurse toolkit of resources, and strategically navigate through unexpected events that may occur during the day.

12:45 pm - 1:00 pm

Break

1:00 pm - 2:15 pm

120 Corporate Presentation*(Pending support)*

2:15 pm - 3:00 pm

Exhibits

Participate in the virtual exhibit hall and chat with industry representatives about their products and services.

3:00 pm - 4:00 pm

Concurrent Sessions (121-123)**121 Building a Nurse Residency / Internship Program****1.0 CH***Sharon Bragg, DNP, RN, CCRN*

What are nurse residency programs and why are they becoming increasingly important in today's work environment? This session will answer these questions and provide an overview of nurse residency programs, including benefits to specialty areas, costs, suggestions for marketing, and the necessary program evaluation process.

122 Liver Disease and Chronic Kidney Disease**1.0 CH, 0.5 Rx***Melissa Anderson, MD*

Liver disease is often noted in patients with chronic kidney disease (CKD). This session will review risk factors and the development of liver failure in patients with CKD as well as diagnostic evaluation and therapeutic management in outpatient and inpatient settings. The discussion will wrap up with a focus on the challenges of managing advanced liver failure and advanced CKD.

123 Baxter PD Excellence Academy ~ PD: What It Is and How It Works**1.0 CH***Ann Mancini, MSN, RN, FNP*

This presentation will provide you with a fundamental overview of the peritoneal membrane anatomy and physiology. Additionally, a review of the peritoneal transport process, PD solutions, membrane transport variability and how they relate to the PET will be discussed.

4:00 pm - 4:15 pm

Break

4:15 pm - 5:15 pm

General Session**130 Telehealth: What You Need to Know****1.0 CH***Michael Kraus, MD*

During the pandemic, telehealth has taken a more prominent role in how people interact with their healthcare providers. Dr. Kraus will discuss ways to incorporate telehealth into your clinic using best practices and lessons learned from other facilities that have implemented telehealth. Tips on reimbursement and billing as well as predictions about the future of telehealth will be shared.

5:15 pm - 6:00 pm

Exhibits

Participate in the virtual exhibit hall and chat with industry representatives about their products and services.

6:00 pm - 7:00 pm

Concurrent Sessions (131-133)**131 "My neighbor said I needed these." The Promise of Herbs and Supplements****1.0 CH, 1.0 Rx***Kristin Larson, MSN, RN, AGNP-BC*

Have you worked with a patient who stated: "My neighbor said I should take these supplements because they will make me better." What was your response? This session will address this scenario and provide tips for how nephrology nurses can handle conversations with patients about herbs and supplements and their potential impact on kidney health.

132 Patient Activation and Self-Management for People with Kidney Disease**1.0 CH***Paul Bennett, PhD, MHSM, BN, RN, GCertSc*

Patient activation - the willingness and ability of a person to manage their healthcare - provides nephrology nurses with a concept and measurement tool to classify people with kidney disease into various activation levels. Applying an individualized approach to patients based on their activation level may increase patients' self-care and self-management of their disease process.

133 Baxter PD Excellence Academy ~ The PD Nurse's Guide to Starting a New Patient Part 1: Patient Training and PD Catheters**1.0 CH***Dorothy Craft, BSN, RN, CDN*

This two-part presentation assists the PD nurse in training a new PD patient and serves as an introduction to PD catheters. This course is based on the *ISPD Syllabus for Teaching Peritoneal Dialysis to Patients and Caregivers* with an overview of the training plan and helpful resources that reinforce some of the learning called out in the syllabus. Create an effective training experience for your new PD patient as you gain essential skills to transfer knowledge to adult learners in a way that is educational, interesting, and interactive.

7:00 pm - 7:15 pm

Break

7:15 pm - 7:45 pm

140 ANNA Town Hall

Meet with members of the ANNA Board of Directors who will be available to answer questions, listen to suggestions and concerns, and discuss issues of importance to ANNA members.

7:45 pm - 8:00 pm

Break

8:00 pm - 9:00 pm

150 Corporate Presentation*(Pending support)*

Monday, May 3

9:00 am - 10:15 am

200 Corporate Presentation*(Pending support)*

10:15 am - 10:30 am

Break

10:30 am - 10:45 am

Welcome & Remarks*Loretta Jackson Brown, PhD, RN, CNN
ANNA Symposium Emcee*

10:45 am - 12:00 nn

General Session**210 Breakthrough Innovations: Ways to Increase Kidney Transplantation in 2021****1.25 CH, 0.5 Rx***David Serur, MD**Matthew Cooper, MD**Peter Kennealey, MD, FACS*

Innovative ways to increase both deceased and living organ donation are being explored. Many programs now transplant kidneys from deceased donors who had hepatitis C. Donors with HIV can now donate kidneys to recipients with HIV (HOPE Act). The Executive Order on Advancing American Kidney Health also has tremendous potential for increasing kidney donation and transplantation. This session will review ground-breaking paradigms in transplantation.

12:00 nn - 12:30 pm

Exhibits

Participate in the virtual exhibit hall and chat with industry representatives about their products and services.

12:30 pm - 1:30 pm

Concurrent Sessions (211-213)**211 HIV and Renal Function****1.0 CH, 1.0 Rx***Casey Martens, MSN, FNP-C*

Medications to manage HIV may impact renal function. This session will review the current state of HIV progression and survivability, first-line drugs used to treat HIV, and the potential impact of these medications on renal function, such as kidney injury and HIV-associated nephropathy (HIVAN).

212 Incremental Dialysis: A Nephrologist's Overview with Patient Perspective**1.0 CH***Kamyar Kalenter-Zadeh, MD, MPH, PhD*

Gain insight into another member of the patient care team as a physician shares his perception of his role in patient care and dialysis. This session also will highlight the patient's perspective of their disease and how these two views of kidney disease and dialysis are similar and dissimilar.

213 Baxter PD Excellence Academy ~ The PD Nurse's Guide to Starting a New Patient Part 2: Success at Home**1.0 CH***Dorothy Craft, BSN, RN, CDN*

In part two of this presentation, optimize your patient's success at home by using approaches and available resources that engage in the continuity of care between the patient and the care team beyond the clinic setting.

1:30 pm - 1:45 pm

Break

1:45 pm - 2:45 pm

220 Corporate Presentation

(Pending support)

2:45 pm - 3:00 pm

Break

3:00 pm - 4:00 pm

Concurrent Sessions (221-223)

221 Severe Mental Illness and Chronic Kidney Disease: Is There a Link?

1.0 CH, 0.5 Rx

Brenda Jahnke, MSN, RN, CNS

Nephrology nurses often care for patients with comorbid diseases but may not be as versed in caring for patients with severe mental illness (SMI). This session will provide information about symptoms of SMI and research findings on mental health issues and kidney disease. A highlight of this session will be the importance of this information to daily practice and how to provide the most effective care to patients with SMI.

222 Blood Pressure Guidelines for Hypertension

1.0 CH, 0.5 Rx

Wendy St. Peter, FCCP, FASN, FNKF

Hyper- and hypotension are a concern for nephrology nurses caring for patients with chronic kidney disease (CKD) receiving dialysis. This session will review the pathophysiology of hypertension in CKD, compare current hypertension guidelines (KDIGO, ACC/AHA), and address the implications of the SPRINT trial on future hypertension guidelines.

223 Baxter PD Excellence Academy ~ Euvolemia: Finding Fluid Balance in PD Part 1

1.0 CH

Beverly Kenna, BSN, RN, CNN

The goal of fluid management in PD is the normalization of extracellular volume. Learn to apply a structured diagnostic approach to the evaluation of fluid balance problems through a review of fundamental concepts in achieving target weight in PD.

4:00 pm - 4:30 pm

Exhibits

Participate in the virtual exhibit hall and chat with industry representatives about their products and services.

4:30 pm - 5:30 pm

Concurrent Sessions (231-233)

231 Abstracts Presentations: Clinical or Case Study Focus

1.0 CH

232 Abstracts Presentations: Research Focus

1.0 CH

233 Baxter PD Excellence Academy ~ Euvolemia: Finding Fluid Balance in PD Part 2

1.0 CH

Beverly Kenna, BSN, RN, CNN

The goal of fluid management in PD is the normalization of extracellular volume. Learn to apply a structured diagnostic approach to the evaluation of fluid balance problems through a review of fundamental concepts in achieving target weight in PD.

5:30 pm - 5:45 pm

Break

5:45 pm - 6:45 pm

240 Specialty Practice Network (SPN) Sessions

6:45 pm - 7:00 pm

Break

7:00 pm - 7:30 pm

General Session

250 Networking with Nurse Blake



Blake Lynch, BSN, RN

Join influencer and social media sensation Nurse Blake as he entertains us with humor and insights into the nursing profession. A registered nurse who has worked in a number of healthcare roles, Nurse Blake is a writer and public speaker who advocates for nurses and patients and encourages a healthy work environment. Learn more about Nurse Blake at nurseblake.com.

7:30 pm - 8:00 pm

Zoom Happy Hour

◆ Tuesday, May 4 ◆

9:00 am - 10:15 am

300 Corporate Presentation

(Pending support)

10:15 am - 10:30 am

Break

10:30 am - 10:45 am

Welcome & Remarks

Loretta Jackson Brown, PhD, RN, CNN

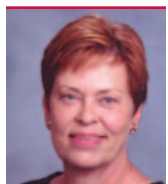
ANNA Symposium Emcee

10:45 am - 12:00 nn

General Session

310 Back to the Future of Home Dialysis: Lessons from the Past

1.25 CH



Denise Eilers, BSN, RN

The Executive Order on Advancing American Kidney Health set a goal of having 80% of individuals with end-stage kidney disease (ESKD) receive home hemodialysis or a pre-emptive transplant. The future of home dialysis will be transformed, but what that future will look like is still to be determined. This session will address these issues, reflecting on experiences from the 1970s to now and exploring potential future trends. Time for group discussion will be included.

12:00 nn - 12:45 pm

Exhibits

Participate in the virtual exhibit hall and chat with industry representatives about their products and services.

12:45 pm - 1:45 pm

Concurrent Sessions (311-313)**311 Effect of COVID-19 on Pediatric Nephrology and Transplant****1.0 CH, 0.5 RX***Tyson Moore, APRN, FNP-C, CPN*

Learn more about the incidence and presentations of COVID-19 in the pediatric population as well as changes in pediatric nephrology practice as a result of COVID. The effects of COVID on pediatric transplant protocol will be another highlight of this session.

312 Renal Cell Carcinoma**1.0 CH, 0.5 Rx***Steven Lucas, MD*

The pathophysiology of renal cell carcinoma and diagnostic tools will open this session. Grading, the respective treatment based on the grading of cancer, and potential for transplantation in patients with renal cell carcinoma also will be addressed.

313 Baxter PD Excellence Academy ~ The Science and Art of Prescription Management in PD: A Workshop Part 1**1.0 CH***Michelle Hofmann, BSN, RN, CNN*

An overview of important concepts regarding prescription management and PD adequacy is presented first; then the presentation moves on to the application of these principles in a workshop-style format.

1:45 pm - 2:00 pm

Break

2:00 pm - 3:00 pm

320 Nephrology Nurse Recognition / ANNA President's Address*Loretta Jackson Brown, PhD, RN, CNN**ANNA Symposium Emcee**David Walz, MBA, BSN, RN, CNN, FACHE**2021-2022 ANNA President*

Celebrate the accomplishments of your colleagues! Dr. Jackson Brown, our symposium emcee, will announce the ANNA Outstanding Achievement Award winners. This session also will include the annual ANNA business meeting, introduction of the 2021-2022 Board of Directors, and a message from 2021-2022 ANNA President David Walz.

3:00 pm - 3:15 pm

Break

3:15 pm - 4:15 pm

Concurrent Sessions (321-323)**321 The Renaissance of Conservative Management for Kidney Failure****1.0 CH, 0.5 Rx***Susan Pamela Yi Wong, MD, MS*

Changes in the management of chronic kidney disease (CKD) occur frequently, and treatments previously used sometimes re-emerge. Conservative management of CKD is being viewed as something new while it has been used before. This session will examine the current state of modality use for CKD and compare it to conservative management. How to individualize plans of care to provide the best care for each individual also will be discussed.

322 Essentials of Pregnancy and Chronic Kidney Disease**1.0 CH, 0.5 Rx***Jessica Tangren, MD*

Pregnancy increases the challenges of planning and implementing care for women with chronic kidney disease (CKD). Review current clinical practice guidelines related to managing care for a pregnant patient with CKD, including differentiating between acute kidney injury and pre-eclampsia.

323 Baxter PD Excellence Academy ~ The Science and Art of Prescription Management in PD: A Workshop Part 2**1.0 CH***Michelle Hofmann, BSN, RN, CNN*

An overview of important concepts regarding prescription management and PD adequacy is presented first; then the presentation moves on to the application of these principles in a workshop-style format.

4:15 pm - 5:00 pm

Exhibits

Participate in the virtual exhibit hall and chat with industry representatives about their products and services.

5:00 pm - 6:00 pm

Concurrent Sessions (330-331)**330 Poster Presentations****1.0 CH**

Poster presenters will discuss their clinical projects and research findings.

331 From Idea to Article: Writing for Publication Workshop**1.0 CH***Beth Ulrich, EdD, RN, FACHE, FAONL, FAAN*

Nephrology Nursing Journal Editor-in-Chief Beth Ulrich will review the manuscript development, peer review, and publication processes and provide tips for developing a plan for writing and submitting a manuscript for publication.

6:00 pm - 6:15 pm

Break

6:15 pm - 7:15 pm

Concurrent Sessions (340-342)**340 Are We Applying Learning Principles when Teaching Older Adults about Chronic Kidney Disease?****1.0 CH***Rowena Elliott, PhD, RN, CNN, AGNP-C, GS-C, CNE, LNC, FAAN*

Dr. Elliott will clarify the principles of providing education to adults and how these principles relate to – and are affected by – patient learning styles. Nephrology nurses are involved in patient education, and these principles should be at the forefront of how we plan and provide education.

341 Calciphylaxis in ESRD**1.0 CH, 0.75 Rx***Sagar Nigwekar, MD*

Calciphylaxis is not uncommon in individuals with kidney disease. Review the incidence, prevalence, risk factors, and diagnostic criteria for calciphylaxis. Discussion will cover skin lesions in calciphylaxis and emerging treatment options to halt the disease's progression.

342 Baxter PD Excellence Academy ~ Infection Prevention: Strategies for PD Nurses**1.0 CH***Lori Campbell, RN, CNN*

Nurses are in a unique role to help increase patients' long-term success with PD by focusing on preventive strategies. Learn how to use the skills and knowledge of your nursing practice to facilitate positive patient outcomes with respect to preventing infectious complications.

7:15 pm - 7:30 pm

Break

7:30 pm - 8:30 pm

Special Entertainment

8:30 pm - 9:00 pm

Zoom Happy Hour**Wednesday, May 5**

9:30 am - 9:45 am

Welcome & Remarks*Loretta Jackson Brown, PhD, RN, CNN**ANNA Symposium Emcee*

9:45 am - 10:45 am

General Session**400 Health Policy Updates****1.0 CH***Donna
Bednarski**James
Twaddell**Donna Bednarski, MSN, RN, ANP-BC, CNN, CNP**James Twaddell, ANNA Health Policy Consultant*

This session will provide an update on health policy impacting nephrology nursing. Expert speakers will share legislative and regulatory policies that have the actual or potential power to influence nursing practice, education, and the delivery of care to patients with kidney disease. Attend this session to learn things of importance to the nursing profession and the lives of our patients.

10:45 am - 11:00 am

Break

11:00 am - 12:00 nn

General Session**410 Lessons from COVID-19: How Will Our Practice Be Changed?****1.0 CH***Tara Millson, DNP, RN, CIC*

Throughout the pandemic, nephrology nurses have had to adapt and meet practice challenges not previously considered. What are the implications for the future of nephrology nursing practice? Dr. Millson will discuss what we have learned, what we have had to do, and what changes we can - or should - expect to see in the future.

12:00 nn - 12:15 pm

Break

12:15 pm - 1:15 pm
Concurrent Sessions (420-421)

420 Caring for Yourself While Caring for Others**1.0 CH***Felicia Speed, LMSW*

Learn more about empathy fatigue - and how to avoid it. Examine the prevalence of burnout and compassion fatigue in the workplace and how to recognize symptoms of burnout in yourself and staff. A highlight of the session will be tips to develop habits of self-care and resiliency.

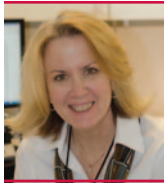
421 Baxter PD Excellence Academy ~ Non-Infectious Complications: 'Escape the Exam Room' Game**1.0 CH***Lori Campbell, RN, CNN*

Become an active participant in an immersive course that challenges you to put your knowledge and clinical deductive skills to the test when confronted with a variety of non-infectious complications. This virtual game utilizes clinical simulations to build confidence, reinforce retention and improve recall.

1:15 pm - 1:30 pm

Break

1:30 pm - 2:30 pm

General Session**430 Vaccination Update****1.0 CH, 1.0 Rx***JoEllen Wolicki, BSN, RN*

Ms. Wolicki will review current recommended immunization schedules for ourselves, our families, and particularly our nephrology patients. As new information about immunity emerges, immunization schedules may be revised and booster doses added. Immunizations that are important for us and our patients will be the highlight of this session.

2:30 pm - 2:45 pm

Break

2:45 pm - 3:45 pm

General Session**440 A Conversation with Richard Knight: View from AAKP****1.0 CH***Richard Knight, MBA, BA*

In our closing session, be a part of a conversation with Richard Knight, President of the American Association of Kidney Patients (AAKP). A transplant recipient and former hemodialysis patient, Mr. Knight is a strong advocate for patients with kidney disease. Learn more about the goals of AAKP and the important role of nephrology nurses in achieving patient- and caregiver-centered care.

3:45 pm - 4:00 pm

Closing Remarks*Loretta Jackson Brown, PhD, RN, CNN**ANNA Symposium Emcee*



ON-DEMAND SESSIONS

In addition to the live sessions featured during the virtual conference program, the following sessions will be pre-recorded and available on demand.

OD1 Mitigating Leadership Burnout

1.25 CH

Judy Kauffmann, DNP, MSN, RN, CNN

Are you exhausted at work? Do you experience chronic stress and fatigue that impairs your ability to be as great as you can be? These are all symptoms of burnout, and you are not alone. As a leader, it is critical to be aware of burnout and its consequences. It is also critical that you manage your personal health. Learn more about how to avoid and minimize burnout during this session.

OD2 Building a Culture of Inclusion: Values, Virtues, Emotion, and Environment

1.25 CH

Alexia Georghiou, MA

Being a member of a marginalized group affects workplace experiences, including engagement. Marginalized groups often face overt and subtle discrimination and higher mental and emotional taxation, both in and outside of work. An inclusive, employee-centered culture is an investment that will pay off in many ways, but it requires time, resources, and a collaborative and synchronized effort to establish. This session will focus on how a culture of inclusion can – and will – develop when organizational leadership works at its best.

OD3 Virtual Leadership

1.25 CH

Kathleen Belmonte, MS, RN, FNP-BC, MBA

Developing a cohesive and effective team is one of the most challenging – and sometimes time-consuming – tasks a leader will encounter. This task is more complicated when it has to be accomplished virtually and teams are not in the same room. This session will uncover some of these challenges and provide tips for fostering teamwork and collaboration.

OD4 Uremic Cardiomyopathy: A Piece of the Chronic Kidney Disease Puzzle

1.25 CH, 0.5 Rx

Brenda Jahnke, MSN, RN, CNS

Because patients with chronic kidney disease (CKD) have an increased risk of death from cardiovascular disease, recognizing the pathologic processes of cardiomyopathy and complications that can result in uremic cardiomyopathy is key for nephrology nurses. This session will address the epidemiology, pathophysiology, diagnosis, and treatment recommendations (including types of dialysis) for cardiomyopathy in patients with CKD. The relationship of uremic cardiomyopathy to mineral and bone disorders seen in CKD also will be discussed.

OD5 Hypotension

1.5 CH, 1.5 Rx

Shannon Lang, MSN, RN, AGACNP-BC

This session will focus on assessments to use and findings that point to a patient developing hypotension during and after dialysis. A highlight will be a discussion of the evidence-based treatment for hypotension in dialysis patients.

OD6 Treatment and Management of Complex Hypertension

1.5 CH, 1.5 Rx

Zorica Kauric-Klein, PhD, APRN-BC

This session will address the management of complex hypertension. Etiology, evaluations, treatment, and desired outcomes will be the focus as we explore this complex and challenging complication. Case study presentations will be used to demonstrate patient care.

In addition to the live sessions featured during the virtual conference program, the following sessions will be pre-recorded and available on demand.

OD7 Resistant Hypertension

1.5 CH, 1.5 Rx

Raymond Townsend, MD

This session will focus on the challenge of caring for a patient with chronic kidney disease who experiences hypertension resistant to treatment. Causes, assessment, and management from medical and nursing perspectives will be addressed.

OD8 Advocating for Safe Staffing Practice in Acute Dialysis and Improving Recruitment and Retention

1.5 CH

Stephanie Elliott, MS, RN, CNN

Staffing practices in the acute dialysis setting vary significantly between hospitals across the country. This session is will address the need for standardized practices in the acute dialysis specialty and the roles and experience levels of nurses and technicians working in the acute environment. The session also will provide tips to help nurses and nurse managers successfully advocate for safe staffing levels at their hospitals.

OD9 Promoting Standards for Safe Workplaces

1.5 CH

Barbara Odom, BSN, RN, CDN

The use of extended work shifts and overtime has escalated as hospitals cope with a shortage of registered nurses. The prevalence of extended work periods can impact patient safety. This session will focus on the need to address safe work hours in the workplace and describe ways to address workplace bullying and violence.

OD10 An Interview with Nijlde Gedney, Home Dialyzer and Patient Advocate

1.5 CH

Patricia Patterson, BSN, RN

This session will feature a patient's journey from in-center hemodialysis to home hemodialysis, including adjustments to the dialysis prescription to enable the patient to feel healthy and energized rather than drained and exhausted. Steps throughout the journey, such as self-cannulation, will be shared so nephrology nurses can appreciate the perspective from the "other side of the bed."



Create Your Virtual Conference Experience

Earn up to **45.5 contact hours and 14 pharmacology credits** through the symposium educational content. Mix and match live and recorded sessions to create the virtual conference experience that works for you.

- All registered attendees will be able to attend all live presentations, and will have access to all live presentations, all recorded sessions, exhibits, and more in the virtual conference library.
- Enjoy flexibility to attend live any day/time you like.
- CNE contact hours are included in the registration package price.
- Extended access! Earn contact hours up to 2 years after the virtual conference.

Program Agenda

All event times are Eastern Time Zone.

Nursing Continuing Professional Development

Earn up to 45.5 contact hours for live and on-demand sessions. Sessions marked with **Rx** contain pharmacology credit hours, which are time-based on the session content. Up to **14.0** pharmacology hours can be accumulated from symposium sessions.

Additional contact hours may be available if corporate support is received for pending presentations.

ANNA urges participants to be aware of the CNE requirements for relicensure in the states in which they hold a license.

American Nephrology Nurses Association is accredited with distinction as a provider of nursing continuing professional development by the American Nurses Credentialing Center's Commission on Accreditation.

ANNA is a provider approved by the California Board of Registered Nursing, provider number CEP 17499.

Baxter PD Excellence Academy

Baxter is offering nurses interested in advancing their peritoneal dialysis (PD) skills the opportunity to attend immersive PD Excellence Academy accredited educational sessions that are included in the symposium program for no extra cost.

Note: If you register for the ANNA National Symposium, you will have access to both ANNA and Baxter PD Excellence Academy sessions. The Baxter PD Excellence Academy sessions are accredited individually through the California Board of Registered Nursing, so attendees will be provided a separate accreditation evaluation link during the educational session they're attending.

Registration

Register online at annanurse.org/symp21.

Registration provides access to all live and on-demand content with a cap on the number of contact hours you can redeem based on the purchased registration package. Registrants will have access to **all** educational content for 2 years.

Please provide your email address when registering to ensure that you receive your registration confirmation and other meeting communications. All communications regarding the meeting will be sent via email.

All mailed registrations must be received with payment by April 19, 2021.

Payment Policy

No registration will be processed unless full payment is received with the registration form. If you do not receive an email confirmation regarding your registration, contact the ANNA National Office to confirm receipt of your registration.

Refund Policy

No cancellations will be accepted, and no refunds will be issued for this conference. Registrants will have access to all conference content, including all live presentations and all on-demand (pre-recorded) sessions. ANNA membership fees are nonrefundable.

Questions?

Contact ANNA: annanurse.org/symp21;
anna@annanurse.org; 888-600-2662 or 856-256-2320

ANNA Conferences Committee Members

Chairperson

Mary Schira, PhD, RN, ACNP-BC

Chairperson Designate

Judy Kauffman, DNP, MSN, RN, CNN

Director of Education Services

Sally Russell, MN, CMSRN, CNE

Committee Members

Marijo Johnson, BSN, RN, CNN

Sharon Longton, BSN, RN, CNN, CCTC

Anna Rogers, MBA, BSN, RN, CNN

Mary Schopbach, BSN, RN, CNN

Leah Foster Smith, MSN, APRN, FNP-BC, CNN-NP, FNKF

American Nephrology Nurses Association | REGISTRATION FORM

2021 National Symposium – May 2-5, 2021

| | | | |
|--|---|--|---|
| NAME | ANNA Membership # | | |
| CREDENTIALS | <input type="checkbox"/> RN/NP <input type="checkbox"/> Non-RN | | |
| PREFERRED ADDRESS | <input type="checkbox"/> Personal <input type="checkbox"/> Business | | |
| COMPANY (if work address) | | | |
| CITY | STATE/PROV | ZIP/POSTAL CODE | COUNTRY |
| PREFERRED DAYTIME TELEPHONE | <input type="checkbox"/> Personal <input type="checkbox"/> Business | | Please indicate if you are: <input type="checkbox"/> Attending National Symposium for the first time |
| EMAIL (required for confirmation) | | | |
| NATIONAL SYMPOSIUM REGISTRATION FEES | | PAYMENT SUMMARY | |
| <p style="text-align: center; color: #e91e63;">Join ANNA / Renew ANNA Membership with Registration</p> <p style="font-size: small;">You must be an ANNA member in good standing at the time you register to qualify for the "Member" rate. To join ANNA (or renew your ANNA membership) when registering, choose the "Regular" registration rate.</p> | | <p>National Symposium \$ _____</p> <p>TOTAL DUE \$ _____</p> <p style="font-size: x-small;"><i>See payment policy at www.annanurse.org</i></p> <p style="text-align: center; color: red; font-weight: bold;">All mailed pre-registrations must be received with payment by April 19, 2021.</p> | |
| <p style="color: #e91e63;">Fee includes 1-year ANNA membership (new or renewal)</p> <p style="color: #e91e63; font-size: 2em;">↓ ↓ ↓</p> | | MEMBER | REGULAR |
| 10 contact hours | <input type="checkbox"/> \$200 | <input type="checkbox"/> \$280 | <input type="checkbox"/> \$300 |
| 20 contact hours | <input type="checkbox"/> \$350 | <input type="checkbox"/> \$430 | <input type="checkbox"/> \$450 |
| 30 contact hours | <input type="checkbox"/> \$450 | <input type="checkbox"/> \$530 | <input type="checkbox"/> \$550 |
| If submitting registration via UPS or Federal Express, send to: ANNA National Office, 200 East Holly Avenue, Sewell, NJ 08080 | | | |

Check enclosed Charge my Visa Mastercard Am. Express
 for the amount of \$ _____
If paying by credit card, you may FAX to 856-218-0557 or email to anna@annanurse.org.

_____ Expiration Date _____
 ACCOUNT NUMBER _____
 Card Security Code: _____ (3-Digit code found on back of Visa & Mastercard;
 4-Digit code on front of American Express.)
 Print Cardholder's Name _____
 Signature _____

Registrations will not be processed without payment. Send completed registration form with payment to ANNA in U.S. funds to:

ANNA National Symposium
East Holly Avenue Box 56
Pitman, NJ 08071-0056
FAX 856-218-0557
anna@annanurse.org

Save time and register online at:

annanurse.org/symp21