



ANNA
American Nephrology
Nurses Association

Nephrology Nursing Summit






REGISTRATION BROCHURE

September 17-20, 2026

The Scottsdale Resort & Spa
Scottsdale, AZ

Enhance your nephrology nursing knowledge and practice at the 2026 Nephrology Nursing Summit.

This dynamic educational program will address current issues and trends in nephrology practice and the care of individuals with kidney disease.

-  **Engage** with visionary speakers and leaders in the nephrology specialty.
-  **Learn** from experts and return to your practice prepared to share your new knowledge and skills.
-  **Network** with professional colleagues and industry representatives.



Be **empowered** to provide enhanced care to individuals with kidney disease and their families.

Attend **in person** or **livestream** from anywhere!



The hybrid educational program features in-person and livestream registration options. Gather with nephrology colleagues and learn in person, or network with other attendees online while you livestream sessions from your home or workplace. Choose the educational experience that meets your professional needs and schedule.



Register by August 10 for the best rates! | annanurse.org/summit26

ANNA Conferences Committee

Chairperson

Jennifer Branch, DNP, APRN, A-GNP-C,
CNN-NP, CCTC, FNKF

Chairperson Designate

Christine Corbett, DNP, FNP-BC, CNN-NP,
ACHPN, FNKF, FANNA

Committee Members

Katie Feldner, PhD, MSN, RN, CNN
Leslie Linderleaf, MSN, RN, CDN
Patricia McCarley, MSN, RN, ACNPc, CNN
Amanda Beth Morelli, MSN, RN, CNN
Lucy Todd, MSN, ACNP, FANNA, CNNe
Catherine Wells, DNP, ACNP, CNN-NP, FNKF

Director of Education Services

Trisha Mims, PhD, MBA, RN, HCM

At the American Nephrology Nurses Association (ANNA), we are committed to health access for all individuals and the core values that support this which are foundational to our culture. We strive to create an environment where all individuals are respected, valued, and empowered, and where our practices are both equitable and inclusive. By embracing and celebrating our differences, ANNA fosters a sense of belonging that unites individuals from all backgrounds, cultures, and perspectives. This inclusive climate strengthens our community and supports the advancement of ANNA's mission and vision.



Conference Agenda

Thursday, September 17

7:30 am – 9:00 am

100 Corporate Breakfast / Product Theater
Pending corporate support

9:15 am - 9:30 am

Welcome and Introductions

9:30 am – 10:30 am

OPENING SESSION

110 Urine Inspiration®: Thriving with CKD Through Empowerment, Partnership, and Purpose
1.0 CH



Sam Trevino

Sam Trevino

Explore current trends in person-centered care by challenging the traditional 'patient' label and emphasizing hope, humor, and humanity to help individuals with CKD THRIVE.

10:30 am – 10:45 am

Presentation of DAISY Award for Health Equity

11:00 am – 12:00 pm

CONCURRENT SESSIONS (121-123)

121 Autoimmune

1.0 CH, Rx

Katerina Jones, DNP, APRN, ANP-C, CNN-NP

Discover how autoimmune diseases contribute to chronic kidney disease. Gain insight into common symptoms and complications and learn practical strategies to manage disease and address the immune response.

122 SGLT2 Inhibitors and GLP-1 Receptor Agonists in CKD: A Pharmacist's Perspective on Renoprotective Therapy - Novice to Expert

1.0 CH, Rx

Tracy Anderson-Haag, PharmD, BCPS, BCTXP

A focused review of SGLT2 inhibitors and GLP-1 receptor agonists in preserving kidney function. Gain insight into patient selection, dosing, safety considerations, and the evolving nurse-pharmacist partnership in optimizing renoprotective care.

123 Trauma-Informed Dialysis Care: Seeing Patients in a New Way

1.0 CH

Brent Butler

Discover current trends in trauma-informed dialysis care and communication. Learn practical approaches to improving patient engagement and reframing challenging behaviors through a trauma-informed lens.

12:15 pm – 1:45 pm

130 Corporate Sponsored Lunch / Product Theater
Supported by an educational grant from Akebia

2:00 pm – 3:00 pm

CONCURRENT SESSIONS (141-143)

141 Effects of Plant-Based Protein Consumption on Kidney Function and Mineral Bone Disorder Outcomes in Adults with Stage 3-5 Chronic Kidney Disease - Novice to Expert

1.0 CH

Elizabeth Nuschke, RD

Examine the latest evidence on plant-based versus animal-based protein intake and kidney outcomes in CKD. Practical guidance on implementing dietary strategies and addressing emerging research gaps.

142 Emotional Intelligence (EQ) as a Leadership Competency: Navigating Complex Patient Care and Team Dynamics in Nephrology

1.0 CH

Judy Kauffman, DNP, RN, CNN

Build your knowledge of emotional intelligence as a key leadership competency. Develop skills related to navigating complex patient care, strengthening team dynamics, and improving shared decision-making.

143 Designing a PD Prescription Based on Membrane Personality

1.0 CH

Lucy Todd, MSN, ACNP, CNNe, FANNA

Take a deeper dive into peritoneal membrane physiology and Peritoneal Equilibration Test (PET) interpretation. Learn how to apply key concepts to design and adjust PD prescriptions as patient needs evolve.

3:15 pm – 4:15 pm

CONCURRENT SESSIONS (151-153)

151 Distinguishing Lymphedema from Fluid Overload: Assessment, Management, and Clinical Decision-Making

1.00 CH, Rx

Kristin Larson, MSN, RN, AGNP-BC, CNN, FANNA

A detailed review of the pathophysiology and clinical features distinguishing lymphedema from fluid overload. Develop skills related to assessment, clinical decision-making, and evidence-based management.



Conference Agenda

152 Keeping Patients in Their Seats: Maximizing Patient Engagement for Adherence

1.00 CH

Michelle Monk, MSW, RYT 200

Discover strategies for improving patient engagement and reducing missed treatments. Identify key considerations for early intervention and sustained adherence in dialysis settings.

153 Gamification in Pediatric Chronic Diseases: Engaging Young Patients in Self-Management – Novice to Expert

1.00 CH

Roger Altizer, PhD

Explore innovative solutions for engaging pediatric patients through gamification and digital health tools. Gain insight into how design can influence behavior change and self-management.

4:30 pm – 6:30 pm

160 Exhibit Hall Grand Opening

Meet with industry representatives and view displays of state-of-the-art technology, products, and services. Beverages and heavy hors d'oeuvres will be served.

Friday, September 18

7:30 am – 9:00 am

200 Corporate Breakfast / Product Theater

Pending corporate support

9:15 am – 10:15 am

CONCURRENT SESSIONS (211-213)

211 Legalities in Home Dialysis

1.0 CH

Joanna Neumann, RN, CNN

Key updates in legal and regulatory considerations for home dialysis will be shared. And how home dialysis must ensure the same infrastructure as in center dialysis. Understand the impact of CMS Conditions of Coverage on facility responsibilities, liability, and patient rights.

212 Kidney Function Preservation and CKD Management

1.0 CH, Rx

Naveed Masani, MD, FACP, FASN

Discover best practices for preserving kidney function in CKD. Learn how to apply pharmacologic and lifestyle strategies, including incremental dialysis approaches.

213 Inpatient Versus Outpatient Dialysis: Key Differences in Care Delivery and Nursing Practice

1.0 CH

Mary Sorey, MSN, ACNP

An overview of key differences in inpatient and outpatient dialysis care delivery. Unpack the challenges and opportunities related to practice environments, patient needs, and care coordination.

10:30 am – 12:00 nn

220 Exhibit Hall Open

12:00 nn – 1:30 pm

230 Corporate Lunch / Product Theater

Pending corporate support

1:45 pm – 2:45 pm

CONCURRENT SESSIONS (241-243)

241 Hypertension in Patients Treated with In-Center Maintenance Hemodialysis – Novice to Expert

1.0 CH

Jennifer Flythe, MD, MPSH

A comprehensive review of hypertension in maintenance hemodialysis. Strengthen your understanding of diagnosis, pathophysiology, and management strategies based on current evidence.

242 Case-based Patient Safety in Nephrology: Strengthening Clinical Judgement and Preventing Harm – Novice to Expert

1.0 CH

Louisa Freiburger, RN, CDN

Engage in a case-based review of patient safety challenges in nephrology at all levels of care to dissect actual incidents that expose system gaps and challenges. Learn practical approaches to strengthening clinical judgment and prevent harm to mitigate risk and improve patient outcomes.

243 Comfort, Dignity, and Choice: End-of-Life Care for Patients with Kidney Disease – Novice to Expert

1.0 CH

Christy Corbett, DNP, FNP-BC, CNN-NP, ACHPN, FNKF, FANNA

Explore current trends in end-of-life care for patients with kidney disease and how to utilize the “Surprise Questions” to guide care planning. Gain insight into care planning, communication strategies, and honoring patient preferences.



Conference Agenda

2:45 pm – 4:15 pm
250 Exhibit Hall Open

4:15 pm – 5:15 pm
CONCURRENT SESSIONS (261-263)

261 Speaking the Same Language: Advancing Interprofessional Communication in Nephrology Care – Novice to Expert

1.0 CH

Felicia Speed, PhD, LMSW

Discover strategies for advancing interprofessional communication in nephrology care. Review real-world applications of team-based approaches that improve outcomes and safety.

262 Transplant Rejection: From Recognition to Precision Prevention – Novice to Expert

1.0 CH, Rx

Nicole Ali, MD

Delve into transplant rejection, from immunologic mechanisms to prevention. Hear expert perspectives on emerging therapies and precision approaches to care.

263 What's New in Vascular Access: Practical Updates for Everyday Nephrology Nursing Practice

1.0 CH

Donna Bednarski, MSN, RN, ANP-BC, CNN, CNP, FANNA

Don't miss this engaging discussion on the latest advancements in vascular access care for nephrology nursing practice. Strengthen your knowledge of emerging technologies, guidelines, and monitoring strategies; while gaining evidence-based insight that can be applied to everyday dialysis practice.

Saturday, September 19

7:00 am – 8:30 am

300 Corporate Sponsored Breakfast Symposium
Pending corporate support

8:45 am – 9:00 am

Introduction

9:00 am – 10:30 am

GENERAL SESSION

301 The Future Is Now: AI and Emerging Technology in Nephrology Nursing (a 90-minute panel discussion)

1.5 CH

Tim Fitzpatrick

Kevin Lyons

Severance MacLaughlin, PhD

Emel Hamilton, MD, MSN/INF, CNN, CGAIB

Discover how artificial intelligence and emerging technologies are transforming kidney care today—and redefining the future of nephrology nursing. Gain insight into real-world applications, opportunities, limitations, and ethical considerations, while discovering the evolving role of nurses in tech-enabled care. Designed with nurses in mind, this panel discussion emphasizes practical relevance, workforce readiness, and responsible innovation—not product promotion.

10:45 am – 12:00 pm

GENERAL SESSION

302 Care That Counts: Value-Based Care in Nephrology Nursing

1.5 CH

Amber Paulus, PhD, RN

Janie Noll, MSN, APRN, FNP-C

Kevin Weinstein, MBA

Lori Finch, MS, RN, CNN

Discover how value-based care is reshaping nephrology nursing—and your role within it. Gain insight into how evolving care models impact patient outcomes, coordination, and cost-effective practice across the care continuum. Learn practical strategies to lead, adapt, and succeed through real-world application, interdisciplinary collaboration, and nurse-driven innovation. Turn policy into everyday practice.

12:00 pm – 1:00 pm

303 Box Lunch

Box lunch available for all registrants and exhibitors.





Conference Agenda

1:00 pm – 2:15 pm

GENERAL SESSION

304 ANNA Advocacy and Health Policy Update

1.25 CH

Donna Bednarski, MSN, RN, ANP-BC, CNN, CNP, FANNA

Donna Painter, MS, RN, CNN, FANNA

Jim Twaddell, MA, BS

Receive key updates in health policy affecting nephrology nursing, as expert speakers discuss key legislation and regulatory policy. Gain insight into legislative and regulatory changes shaping practice and patient care in the field of kidney disease; and how these important developments affect the overall well-being of patients.

2:30 pm – 3:45 pm

GENERAL SESSION

305 Blind Chick Living

1.25 CH

Michael & Christina Gilchrist

Hear expert perspectives on the lived experience of dialysis through a patient and caregiver lens. Strengthen your understanding of the human impact of kidney disease.

4:00 pm – 5:30 pm

306 Foundation Fundraiser

Join us for a special outdoor event in support of the Nephrology Nursing Foundation! Enjoy music, refreshments, and networking while helping make a difference in the future of nephrology nursing. Relax, connect with colleagues, and support scholarships, research, and education through your generous donation to the Foundation. Together, we can make an impact — one gift at a time!



Sunday, September 20

7:00 am – 8:00 am

400 Continental Breakfast

8:15 am – 9:45 am

GENERAL SESSION

401 Ask the Experts: Real-World Solutions for Today's Nephrology Nurse - Novice to Expert

1.5 CH, Rx

John Thompson, MSN, RN, CNN, NE-BC

Leah Foster Smith, MSN, APRN, FNP-BC,

CNN-NP, FNKF, FANNA, FAANP

Judy Kauffman, DNP, RN, CNN



John Thompson



Leah Foster-Smith



Judy Kaufman

Navigate the evolving landscape of nephrology nursing and the opportunities to grow your impact. Whether you're early in your career or ready for what's next, gain insight into diverse pathways—from bedside care to advanced practice, research, education, and policy. Hear real-world perspectives from expert nurses on transitioning into leadership roles, the importance of certification, and building a resilient, future-ready career.

9:45 am – 10:00 am

Closing Remarks/NN Summit Adjourns





On Demand Sessions

On-demand sessions will be available for additional contact hour credit via the ANNA Online Library. On-demand session content is included with full conference registration; full conference registrants also may redeem up to 10.0 contact hours for on-demand sessions. The planned on-demand sessions for the conference are listed below. (Note: contact hours are to be determined.)

ODO1 Dialysis in Longterm Care: Population Differences, Care Models, Collaborations and Communication Strategies - Novice to Expert

Treavce Whitmore, BSN, RN

Explore current trends in dialysis care delivery within long-term care settings, including the integration of home hemodialysis. Gain insight into the benefits, limitations, and operational considerations of different models. Learn practical approaches to strengthening collaboration, improving communication, and overcoming common barriers such as care coordination, staffing, and patient complexity.

ODO2 Machine and Live data from CRRT machines. How and what to use now in 2026

Ian Baldwin, PhD, RN, BN-Ed, FACCCN

Apply key concepts into the use of CRRT machines and real-time data to optimize therapy and reduce complications. Enhance your knowledge of bedside nursing roles in monitoring, documentation, alarm management, and troubleshooting to improve safety and outcomes.

ODO3 Engaging Communities to Advance Kidney Health Education for Older Adults - Novice to Expert

Katie Feldner, PhD, MSN, RN, CNN

Discover strategies for building meaningful community partnerships that advance kidney health education for older adults. Learn how to apply age-friendly, culturally responsive approaches that foster trust, connection, and sustained engagement.

ODO4 Complicated Access Failing

Donna Bednarski, MSN, RN, ANP-BC, CNN, CNP, FANNA

Practical guidance on managing complex vascular access challenges in dialysis patients. Develop skills related to identifying dysfunction, plan future access using a life-plan approach, and safely caring for patients with limited access options.

ODO5 An Overview of Pediatric Dialysis: Challenges and Consideration for Pediatric Patients Novice to Expert

Alicia Zerkle, BS, RN

An overview of pediatric dialysis, including key challenges and considerations in caring for this population. Identify key considerations for treatment adjustments, medication dosing, and providing safe, effective care when pediatric patients are treated in adult settings.

ODO6 Disaster Management

Susan Caponi MBA, RN, CPHQ, CPXP

Tom Bradsell, CEM, ABCP, CFI-I

This session reviews critical preparedness resources designed to help individuals receiving dialysis maintain their health and safety during unforeseen disruptions, such as natural disasters or power outages. Since dialysis is a life-sustaining treatment that relies on specific infrastructure, advanced planning is essential to prevent medical emergencies when regular clinic schedules are interrupted.

ODO7 PCTs as Equity Partners in ESRD Care: Supporting Diverse Patient Populations

Andrea Lewis, LMSW

Discover innovative solutions for advancing equity in ESRD care through the vital role of Patient Care Technicians. Gain insight into team-based strategies, collaborative practices, and leadership approaches that support equitable, patient-centered care.



On Demand Sessions

ODO8 Development of a Continuous Renal Replacement Therapies (CRRT) Team

*Lainey Segovia, BSN, RN, CCRN
Taelor Pena, BSN, RN*

Learn from real-world applications of building an interdisciplinary CRRT team to improve education, standardization, and clinical support. Unpack the challenges and opportunities related to training, workflow optimization, and timely therapy delivery.

ODO9 Patients as Partners in Research: Working with Patient Partnership Boards in Nephrology Nursing Research

Mary Hannan, PhD, APRN, AGACNP-BC,

Examine the latest approaches to patient-engaged research in nephrology nursing. Gain insight into how patient partnership boards can shape interventions and strengthen evidence-based, patient-centered practice.

ODO10 Bridging the Gap: Social Determinants of Health in Nephrology and Kidney Transplant Care

Emma Rinas, MS, RN

Explore current trends in addressing social determinants of health across the nephrology and transplant continuum. Understand the impact of structural barriers, inequities, and social factors on patient outcomes, and identify strategies to improve access and care navigation.

Register by **August 10** for the best rates! annanurse.org/summit26





Invited Faculty

Nicole Ali, MD, Medical Director, Kidney Transplantation; Director, Quality Transplant Institute, NYU Langone Health, New Hyde Park, NY (Session 262)

Tracy Anderson-Haag, PharmD, BCPS, BCTXP, Clinical Pharmacy Specialist, Kidney Transplantation, Hennepin Healthcare, Blaine, MN (Session 122)

Roger Altizer, PhD, Director, Therapeutic Games and Lab, Co-Director Digital Health Initiative, Director of Graduate Studies; Population Health Sciences, University of Utah; Division of Health System Innovation and Research, Salt Lake City, UT (Session 153)

Ian Baldwin, PhD, RN, BN-Ed, FACCCN, Retired, Diamond Creek, Victoria, Australia (Session ODO2)

Donna Bednarski, MSN, RN, ANP-BC, CNN, CNP, FANNA, Nurse Practitioner Dialysis Access, Detroit Medical Center, Canton, MI (Session 263, 304, OD04)

Tom Bradsell, CEM, ABCP, CFI-I, Assistant Director, IPRO, Emergency Response Lead, KHARES, IPRO, Otis, ME (Session OD06)

Brent Butler, Case Manager, Seasons of Change, Ft. Worth, TX (Session 123)

Susan Caponi, MBA, RN, CPHQ, CPXP, Vice President, IPRO, Project Director, KHARES, IPRO, Jericho, NY (Session OD06)

Christine Corbett, DNP, CNP, FNP-BC, CNN-NP, ACHPN, FNKF, FANNA, Director, Therapeutic Games and Lab, Co-Director Digital Health Initiative, Director of Graduate Studies; Population Health Sciences, George Washington University, La Luz, NM (Session 243)

Katie Feldner, PhD, MSN, RN, CNN, Nursing Faculty, University of Utah, College of Nursing, Salt Lake City, UT (Session OD03)

Lori Finch, MS, RN, CNN, Regional Clinical Director, Strive Health, Newport News, VA (Session 302)

Tim Fitzpatrick, Founder, Signals Group, San Diego, CA (Session 301)

Jennifer Flythe, MD, MPSH, Division Chief and Professor of Medicine, University of North Carolina at Chapel Hill, Chapel Hill, NC (Session 241)

Leah Foster Smith, MSN, APRN, FNP-BC, CNN-NP, FNKF, FANNA, FAANP, Director of Advanced Practice Providers; Chief Education Officer, Metrolina Nephrology Associates; Interactive Nephrology, Mooresville, NC (Session 401)

Louisa Freiburger, RN, CDN, Area Manager of Education, Alaska Dialysis (USRC), Big Lake, AK (Session 242)

Michael & Christina Gilchrist, Living on Dialysis, Roy, UT (Session 305)

Emel Hamilton, MD, MSN/INF, CNN, CGAIB, Global VP of Clinical Systems, Fresenius Medical Care, North Grafton, MA (Session 301)

Mary Hannan, PhD, APRN, AGACNP-BC, Assistant Professor, University of Illinois Chicago, Chicago, IL (Session OD09)

Katerina Jones, DNP, APRN, ANP-C, CNN-NP, Nurse Practitioner, Metrolina Nephrology Associates, Cramerton, NC (Session 121)

Judy Kauffman, DNP, RN, CNN, Program Manager, Cellular Therapies & Stem Cell Transplant, University of Virginia Health, Verona, VA (Session 142, 401)

Kristin Larson, MSN, RN, AGNP-BC, CNN, FANNA, Adjunct Professor, Roseman University, Salt Lake City, UT (Session 151)

Andrea Lewis, LMSW, Healthy Community Specialist, Quality Insights, Glen Allen, VA (Session OD07)

Kevin Lyons, Founder and CEO, ROAR Labs, Winter Haven, FL (Session 301)

Severance MacLaughlin, PhD, Founder and CEO, DeLorean Artificial Intelligence, Palm Beach, FL (Session 301)

Naveed Masani, MD, FACP, FASN, Medical Director, Dialysis Services, NYU Langone Hospital, Mineola, NY (Session 212)

Michelle Monk, MSW, RYT 200, Clinical Social Work Coordinator, UVA Health, Crimora, VA (Session 152)

Joanna Neumann, RN, CNN, US Renal, San Jose, CA (Session 211)

Janie Noll, MSN, APRN, FNP-C, Regional Director, Clinical Operations VBC, Kidneylink, Wichita, KS (Session 302)

Elizabeth Nuschke, RD, Quality Improvement Specialist, Quality Insights, Midlothian, VA (Session 141)

Donna Painter, MS, BSN, CNN, FANNA, Regulatory Surveyor, National Dialysis Accreditation Commission, Corsicana, TX (Session 304)

Amber Paulus, PhD, RN, Associate Chief Nephrology Research & Data Analytics; Assistant Professor, Virginia Commonwealth University, Mechanicsville, VA (Session 302)

Taelor Pena, BSN, RN, CRRT Coordinator, Children's Health, McKinney, TX (Session OD08)

Emma Rinas, MS, RN, Kidney/Pancreas Transplant Nurse Coordinator, The University of Kansas Health System, Kansas City, MO (Session OD10)

Lainey Segovia, BSN, RN, CCRN, CRRT Coordinator, Children's Health, Dallas, TX (Session OD08)

Mary Sorey, MSN, ACNP, Assistant in Medicine, Division of Nephrology & Hypertension, Fresenius Medical Care, Pelzer, SC (Session 213)

Felicia Speed, PhD, LMSW, Vice President, Social Work Services Nursing and Clinical Services, Fresenius Medical Care, Pelzer, SC (Session 261)

John Thompson, MSN, RN, CNN, NE-BC, Regional Director, Clinical Operations, US Renal Care, Pharr, TX (Session 401)

Lucy Todd, MSN, ACNP, CNNe, FANNA, Retired, Asheville, NC (Session 143)

Sam Trevino, Manager, Owner, Fresenius Medical Care and Urine Inspiration, LLC, Jamestown, MO (Session 110)

Jim Twaddell, MA, BS, Senior Policy Advisor, Venable, LLP, Washington, DC (Session 304)

Kevin Weinstein, MBA, CEO, Renalogic, Chicago, IL (Session 302)

Treavce Whitmore, BSN, RN, Area Manager of Education, Dialyze Direct, Chesapeake, VA (Session OD01)

Alicia Zerkle, BS, RN, Senior Manager, Clinical Methods and System, Fresenius Medical Care, Pegram, TN (Session OD05)



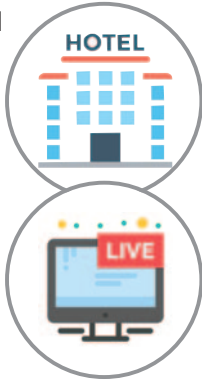
General Information

Registration

Register at annanurse.org/summit26. In-person and livestream options are available. Livestream sessions are to be determined and will be announced closer to the conference date.

All conference communications will be sent via email. Please provide your email address when registering to ensure you receive your registration confirmation and other conference communications.

All in-person pre-registrations must be received with payment by September 13, 2026. In-person registrations received after this date will be processed onsite.



Deals & Discounts

- Register by August 10, 2026, for early bird rates.
- **ANNA Members** save \$150 on registration.
- **Register for the conference and join ANNA** – or renew your ANNA membership – for one low rate. Regular registration fees include 1-year ANNA membership. (International registrants who register at the Regular rate receive a virtual international membership.)

Nursing Continuing Professional Development

Gain ANCC contact hours for your professional development, recertification, and relicensure. Sessions marked with **Rx** contain pharmacology credit hours.

American Nephrology Nurses Association is accredited as a provider of nursing continuing professional development by the American Nurses Credentialing Center's Commission on Accreditation. Approval P0022.

As a designated Approved Provider by the American Board for Transplant Certification (ABTC), ANNA grants Category 1 Continuing Education Points for Transplant Certifications (CEPTC) for this offering. Approval #20004.

ANNA is a provider approved by the California Board of Registered Nursing, provider number CEP 17499.

ANNA urges participants to be aware of NCPD requirements for relicensure in the state in which they hold a license.

Payment Policy

No registration will be processed unless full payment is received with the registration form. If you do not receive an email confirming your registration, please contact the ANNA National Office.

Cancellations

Cancellations must be requested in writing. A \$50 administrative fee will be assessed on all written cancellations received prior to **August 25, 2026**. No refunds will be issued after this date. Membership dues are nonrefundable.

If ANNA finds it necessary to cancel or postpone this conference for any reason, including but not limited to low registration response, strikes, pandemics, or acts of God, ANNA shall not be liable for registrants' expenses.

Media Release

ANNA occasionally uses photographs/video of ANNA meeting participants in its publications, website, social media, and promotional materials. By virtue of your attendance at the conference, you agree to usage of your likeness in such material.

Questions

Contact ANNA:
annanurse.org/summit26
anna@annanurse.org
888-600-2662 or 856-256-2320





Hotel & Travel Information

Hotel Reservations

The Scottsdale Resort & Spa is the official hotel for the conference.

Scottsdale Resort & Spa
7700 East McCormick Parkway
Scottsdale, AZ 85258

Room Rate: \$249 single/double occupancy rooms,
\$259 for triple/quad occupancy rooms + taxes
(currently 13.97 %)

Check In: 4:00pm **Check Out:** 11:00am

Online Reservations:

<https://book.passkey.com/e/51233178>

Phone Reservations: 480-991-9000

The discounted conference rates are available until **August 18, 2026**, or until the room block is full. Reservations received after this date are subject to space and rate availability. (Taxes subject to change.)

Note: Only make your hotel reservations via the ANNA reservation link or hotel phone number provided above. ANNA does not use a housing agency. No one from ANNA or the conference hotel will call or email you to make a hotel reservation; ignore any communications you may receive from outside agencies.

Hotel Parking

Self-parking is available onsite for \$15 per vehicle per day with in and out privileges. Valet is available for \$35 per vehicle per day (rates subject to change).

Airport/Transportation

Phoenix Sky Harbor International Airport (PHX) is about 17 miles away from the Scottsdale Resort & Spa. Transportation between the hotel and the airport is approximately \$24-\$40 one way via rideshare (rates subject to change).

Weather

The weather in Scottsdale in September has highs around 100 degrees and lows around 68 degrees. Temperatures in hotel meeting rooms may vary, so please remember to pack a sweater. We suggest you bring comfortable walking shoes for your conference activities.

Experience Scottsdale

Explore Scottsdale during your stay. The Scottsdale Resort & Spa is conveniently located between Old Town Scottsdale and Scottsdale Quarter, with easy access to local shopping, dining, and entertainment. Attendees can also enjoy the nearby scenic views and hiking trails of Camelback Mountain.

For sightseeing ideas, visit
experiencescottsdale.com

or

thescottsdaleresort.com/experience/overview.



American Nephrology Nurses Association | REGISTRATION FORM

Nephrology Nursing Summit • September 17-20, 2026

**4 easy ways to register.
Reserve your spot today!**

Registrations will not be processed without payment. Send completed registration form with payment to ANNA in U.S. funds.

ONLINE
credit card payments only
annanurse.org/summit26

EMAIL
credit card payments only
anna@annanurse.org

FAX
credit card payments only
856-218-0557

MAIL (with payment)
ANNA Registration
Box 56
Pitman, NJ 08071-0056

If sending via UPS or Federal Express, send to:
ANNA National Office
200 East Holly Avenue
Sewell, NJ 08080



NAME		ANNA Membership #	
CREDENTIALS		<input type="checkbox"/> PCT <input type="checkbox"/> LPN <input type="checkbox"/> RN/NP <input type="checkbox"/> APRN <input type="checkbox"/> Non-RN	
PREFERRED ADDRESS <input type="checkbox"/> Personal <input type="checkbox"/> Business			
COMPANY (if work address)			
CITY	STATE/PROV	ZIP/POSTAL CODE	COUNTRY
PREFERRED DAYTIME TELEPHONE <input type="checkbox"/> Personal <input type="checkbox"/> Business		<i>Please check one of the following.</i> I am registering as: <input type="checkbox"/> Administrator/Nurse Manager <input type="checkbox"/> Advanced Practice Nurse <input type="checkbox"/> Staff Nurse <input type="checkbox"/> Educator <input type="checkbox"/> Other	
EMAIL (required for confirmation)		Please indicate if you are: <input type="checkbox"/> Attending ANNA Summit for the first time	
NICKNAME FOR BADGE			

REGISTRATION FEES	PAYMENT SUMMARY
-------------------	-----------------

Join ANNA / Renew ANNA Membership with Registration		
You must be an ANNA member in good standing at the time you register to qualify for the "Member" rate. To join ANNA (or renew your ANNA membership) when registering, choose the "Regular" registration rate.		
Fee includes 1-year ANNA membership (new or renewal)		
MEMBER	REGULAR	NONMEMBER



In-Person Registration Options			
Early Bird (received by 8/10)	<input type="checkbox"/> \$550	<input type="checkbox"/> \$675	<input type="checkbox"/> \$700
Regular (received 8/10-9/13)	<input type="checkbox"/> \$600	<input type="checkbox"/> \$725	<input type="checkbox"/> \$750
Late/Onsite (received on/after 9/14 + onsite)	<input type="checkbox"/> \$650	<input type="checkbox"/> \$775	<input type="checkbox"/> \$800
1-Day (check day) <input type="checkbox"/> Thu <input type="checkbox"/> Fri <input type="checkbox"/> Sat <input type="checkbox"/> Sun	<input type="checkbox"/> \$250	<input type="checkbox"/> \$375	<input type="checkbox"/> \$400
Livestream Registration Options			
Early Bird (received by 8/10)	<input type="checkbox"/> \$450	<input type="checkbox"/> \$575	<input type="checkbox"/> \$600
Regular (received 8/10-9/13)	<input type="checkbox"/> \$525	<input type="checkbox"/> \$650	<input type="checkbox"/> \$675
Late (received on/after 9/14)	<input type="checkbox"/> \$575	<input type="checkbox"/> \$700	<input type="checkbox"/> \$725
1-Day (check day) <input type="checkbox"/> Thu <input type="checkbox"/> Fri <input type="checkbox"/> Sat <input type="checkbox"/> Sun	<input type="checkbox"/> \$250	<input type="checkbox"/> \$375	<input type="checkbox"/> \$400

TOTAL DUE \$ _____

All in-person pre-registrations must be received with payment by September 13, 2026. In-person registrations received after this date will be processed onsite.

Session Choices (to be completed ONLY if you are attending the in-person conference)			
--	--	--	--

Thursday (9/17)	Friday (9/18)	Saturday (9/19)	Sunday (9/20)
7:30am <input type="checkbox"/> 100 Breakfast/Program (pending)	7:30am <input type="checkbox"/> 200 Breakfast/Program (pending)	7:00am <input type="checkbox"/> 300 Breakfast	7:00am <input type="checkbox"/> 400 Continental Breakfast
9:30am <input type="checkbox"/> 110 Opening Session	9:15am <input type="checkbox"/> 211 <input type="checkbox"/> 212 <input type="checkbox"/> 213	9:00am <input type="checkbox"/> 301 General Session	8:15am <input type="checkbox"/> 401 Closing Session
11:00am <input type="checkbox"/> 121 <input type="checkbox"/> 122 <input type="checkbox"/> 123	12:00pm <input type="checkbox"/> 230 Lunch/Program (pending)	10:45am <input type="checkbox"/> 302 General Session	If any special disability or meal arrangements are needed, please attach a note of explanation.
12:15pm <input type="checkbox"/> 130 Lunch/Program (pending)	1:45pm <input type="checkbox"/> 241 <input type="checkbox"/> 242 <input type="checkbox"/> 243	12:00pm <input type="checkbox"/> 303 Box Lunch	
2:00pm <input type="checkbox"/> 141 <input type="checkbox"/> 142 <input type="checkbox"/> 143	4:15pm <input type="checkbox"/> 261 <input type="checkbox"/> 262 <input type="checkbox"/> 263	1:00pm <input type="checkbox"/> 304 General Session	
3:15pm <input type="checkbox"/> 151 <input type="checkbox"/> 152 <input type="checkbox"/> 153		2:30pm <input type="checkbox"/> 305 General Session	
4:30pm <input type="checkbox"/> 160 Exhibits/Reception		4:00pm <input type="checkbox"/> 306 Foundation Fundraiser	

Check enclosed Card Security Code: _____ (3-Digit code found on back of Visa & Mastercard; 4-Digit code on front of American Express.)
 Charge my Visa Mastercard Am. Express
 for the amount of \$ _____ Print Cardholder's Name _____
 _____ Signature _____
 ACCOUNT NUMBER _____
 Expiration Date _____